





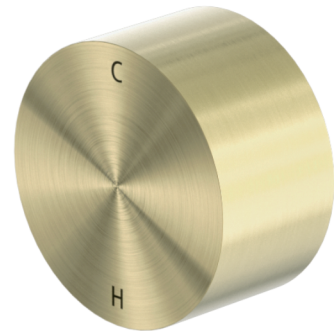


Kara Progressive Shower Mixer

Finish & SKU

	Chrome NR271909CH		Brushed Nickel NR271909BN
	Matte Black NR271909MB		Brushed Gold NR271909BG
	Brushed Bronze NR271909BZ		Gun Metal NR271909GM



Specifications

Watermark License

WM-060073

Temperature Rating

Min 1°C-Max 75°C

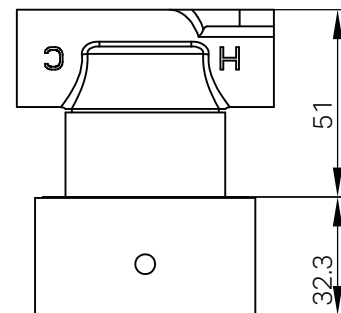
Pressure Rating

Min 150kpa-Max 500kpa

Warranty



Lead Free

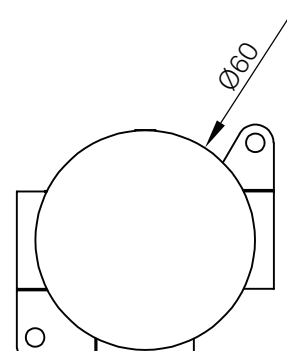


Features

- 25mm brass progressive cartridge
- Solid brass construction for longevity
- Body inlet - 1/2 BSP female
- Packed separately (body and trim kits)

Maintenance And Care

- Regularly check the mixer and connections for signs of wear or leaks.
- Clean the tap with mild soapy water to maintain its appearance, avoiding harsh chemicals and abrasive materials that may damage the finish.



- Dimensions are nominal measurements only.