

Serenity Progressive Wall Basin Mixer 160/185/220mm Spout With Marquina Black Handle

Finish & SKU

-  **Chrome**
24E138 CH/ 24E139 CH/ 24E140 CH
-  **Matte Black**
24E138 MB/ 24E139 MB/ 24E140 MB
-  **Brushed Nickel**
24E138 BN/ 24E139 BN/ 24E140 BN
-  **Brushed Gold**
24E138 BG/ 24E139 BG/ 24E140 BG
-  **Gun Metal**
24E138 GM/ 24E139 GM/ 24E140 GM
-  **Brushed Bronze**
24E138 BZ/ 24E139 BZ/ 24E140 BZ



Specifications

Watermark License

WM-060073

Temperature Rating

Min 1°C-Max 75°C

Pressure Rating

Min 150kpa-Max 500kpa

Warranty



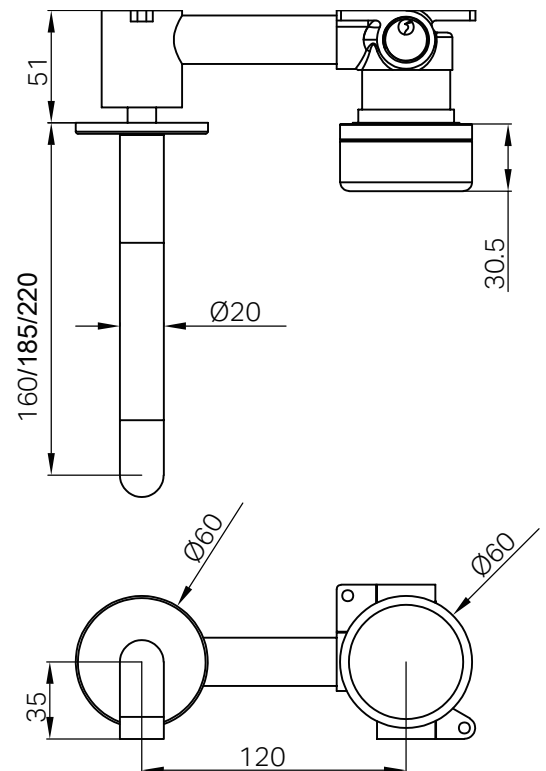
Lead Free

Features

- A complete wall basin mixer set, including Body and Trim Kit for a seamless installation.
- Features a sleek 160/185/220mm spout for a refined and functional design.
- Handle options include natural Italian marble (Carrara, Rome Travertine, Marquina Black) and customizable selections (Verde Alpi, Arabescato Corchia), alongside a sleek Metal Handle.
- Equipped with a progressive cartridge for smooth water flow and precise temperature control.
- Available in six stunning finishes: Chrome, Matte Black, Brushed Nickel, Brushed Gold, Gun Metal, and Brushed Bronze.
- Note: This product is packaged with the Body and Trim Kit as separate components. Together, they form the complete Serenity Progressive Wall Basin Mixer. This packaging ensures flexibility during installation and shipping.
- Includes an additional non-restricting aerator for bath use.

Maintenance And Care

- Regularly check the mixer and connections for signs of wear or leaks.
- Clean the tap with mild soapy water to maintain its appearance, avoiding harsh chemicals and abrasive materials that may damage the finish.
- Avoid contact with highly pigmented substances such as red wine, coffee, and ink, as they may cause permanent staining.



- Dimensions are nominal measurements only.