

Serenity Progressive Wall Basin Mixer 160/185/220mm Spout With Carrara Handle

Finish & SKU

-  **Chrome**
24E061 CH/ 24E067 CH/ 24E073 CH
-  **Matte Black**
24E061 MB/ 24E067 MB/ 24E073 MB
-  **Brushed Nickel**
24E061 BN/ 24E067 BN/ 24E073 BN
-  **Brushed Gold**
24E061 BG/ 24E067 BG/ 24E073 BG
-  **Gun Metal**
24E061 GM/ 24E067 GM/ 24E073 GM
-  **Brushed Bronze**
24E061 BZ/ 24E067 BZ/ 24E073 BZ



Specifications

Watermark License

WM-060073

Temperature Rating

Min 1°C-Max 75°C

Pressure Rating

Min 150kpa-Max 500kpa

Warranty



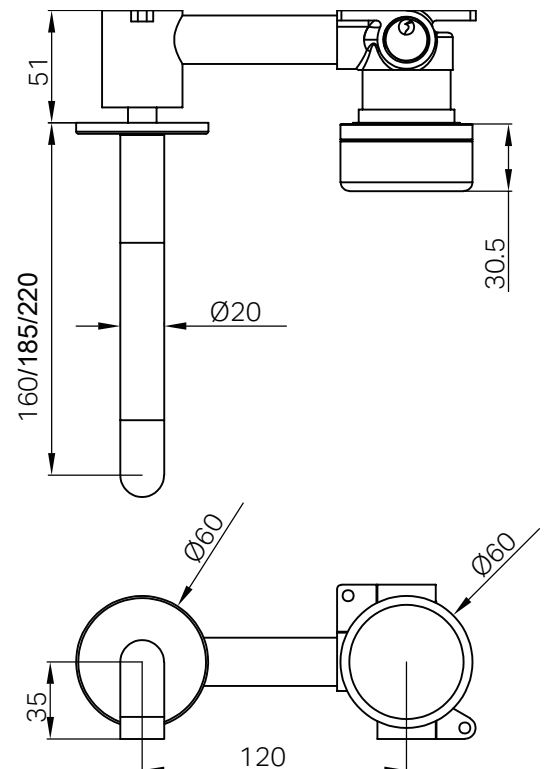
Lead Free

Features

- A complete wall basin mixer set, including Body and Trim Kit for a seamless installation.
- Features a sleek 160/185/220mm spout for a refined and functional design.
- Handle options include natural Italian marble (Carrara, Rome Travertine, Marquina Black) and customizable selections (Verde Alpi, Arabescato Corchia), alongside a sleek Metal Handle.
- Equipped with a progressive cartridge for smooth water flow and precise temperature control.
- Available in six stunning finishes: Chrome, Matte Black, Brushed Nickel, Brushed Gold, Gun Metal, and Brushed Bronze.
- Note: This product is packaged with the Body and Trim Kit as separate components. Together, they form the complete Serenity Progressive Wall Basin Mixer. This packaging ensures flexibility during installation and shipping.
- Includes an additional non-restricting aerator for bath use.

Maintenance And Care

- Regularly check the mixer and connections for signs of wear or leaks.
- Clean the tap with mild soapy water to maintain its appearance, avoiding harsh chemicals and abrasive materials that may damage the finish.
- Avoid contact with highly pigmented substances such as red wine, coffee, and ink, as they may cause permanent staining.



- Dimensions are nominal measurements only.