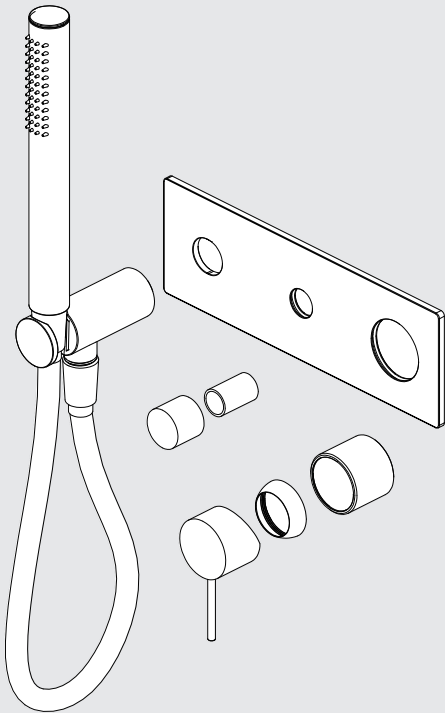


Mecca Shower Mixer Diverter System Trim Kits Only

Nero



Lead Free



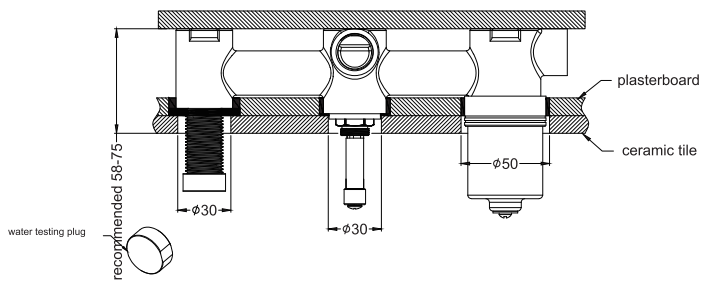
Versions:202506



Drawing	Specifications	Packaging Includes
	Watermark License WM-060073 Temperature Rating Min 1°C-Max 75°C Pressure Rating Min 150kpa - Max 500kpa	1x Plate 1x Handle 1x Cartridge Bell 1x Dressing Ring 1x Hand Shower 1x Hose 1x Bracket 1x Knob 1x Sleeve
	Finish & SKU	
	<div> <div> Chrome NR221912etCH </div> <div> Gun Metal NR221912etGM </div> <div> Brushed Bronze NR221912etBZ </div> <div> Brushed Nickel NR221912etBN </div> <div> Matte Black NR221912etMB </div> <div> Brushed Gold NR221912etBG </div> <div> Matte White NR221912etMW </div> </div>	

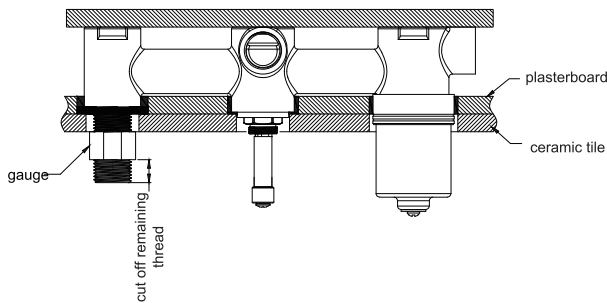
*Dimensions are nominal measurements only.

Installation Instruction For Shower System Body Only

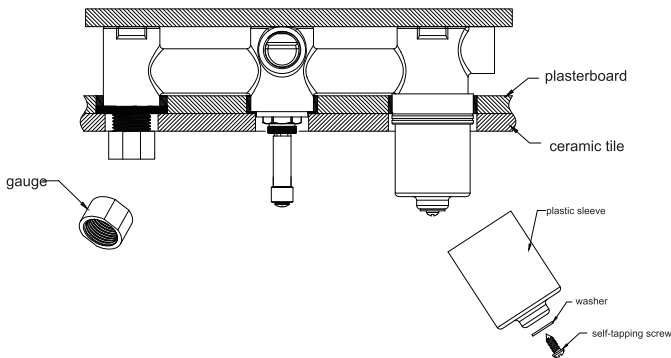


1. Drill a 50mm hole and two 30mm holes into the ceramic tile, then proceed to install the ceramic tile as shown in the diagram above.

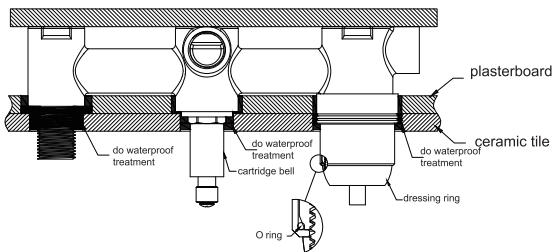
2. Remove the water testing plug.



3. Put gauge onto the outlet as above picture. And cut off remaining thread using the provided gauge as a guide.



4. Remove the gauge, self-tapping screw, washer, and plastic sleeve in sequence.

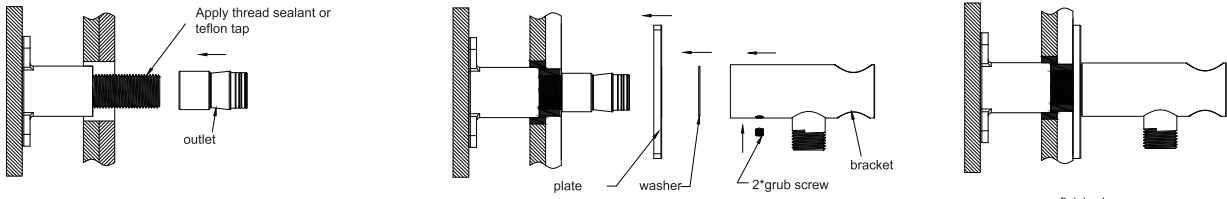


5. Place an O-ring on the edge of the cartridge bell and slide the cartridge bell onto the cartridge.

6. Apply waterproof treatment to the three areas indicated in the diagram above.

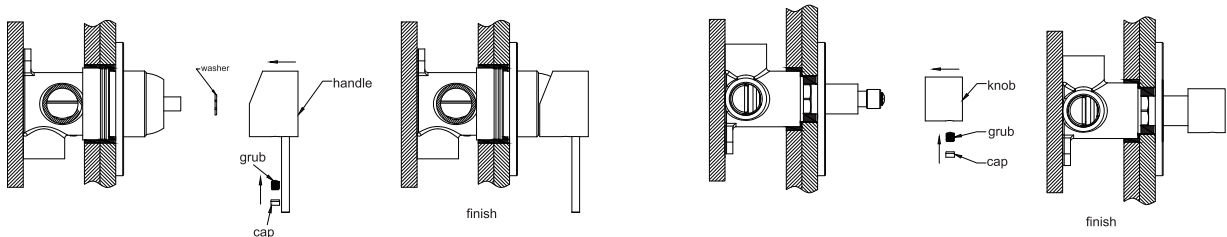
7. Tighten up the dressing ring on the cartridge bell, and slide diverter cartridge bell onto the cartridge.

Installation Instruction For Shower System Trim Kits Only



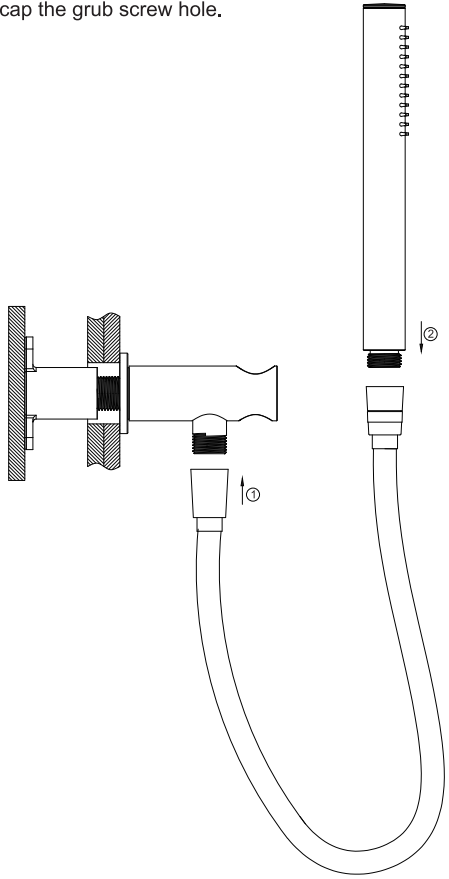
8. Apply thread sealant or Teflon tape to the outlet thread, then use a wrench to tighten the outlet onto it.

9. Install the plate, washer, and bracket onto the outlet body in the order shown above.

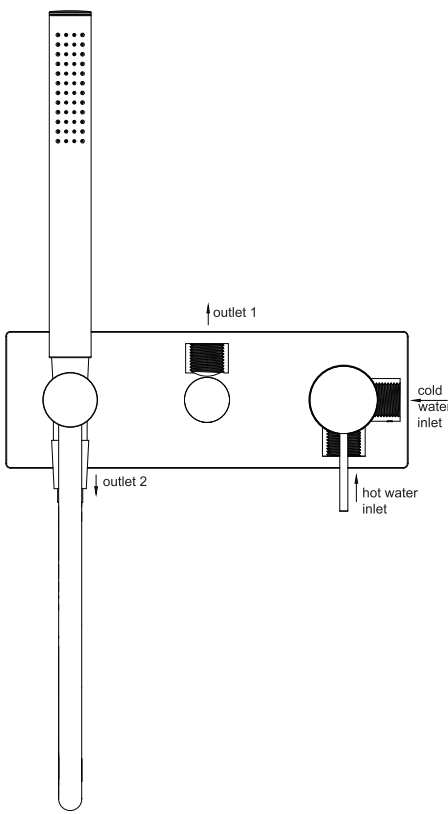


10. Attach the washer to the cartridge, position the handle, tighten it with a grub screw using an Allen key, and cap the grub screw hole.

11. Position the diverter knob, tighten it with a grub screw using an Allen key, and cap the grub screw hole.



12. Connect the hand shower to the bracket with the hose.



13. TEST & CHECK FOR LEAKS.

Nero

