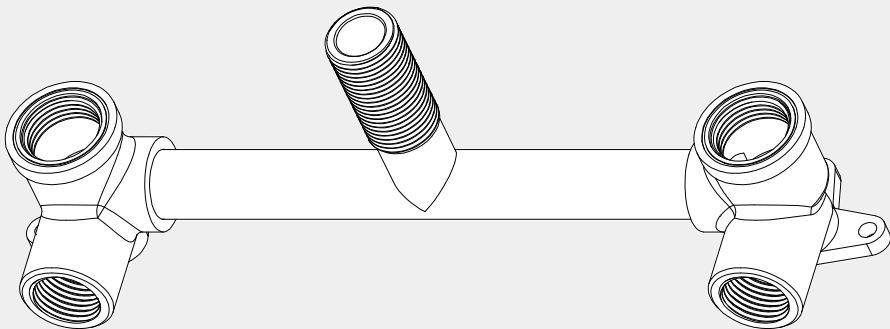


In Wall Basin/Bath Breech For X Plus/York/Kara

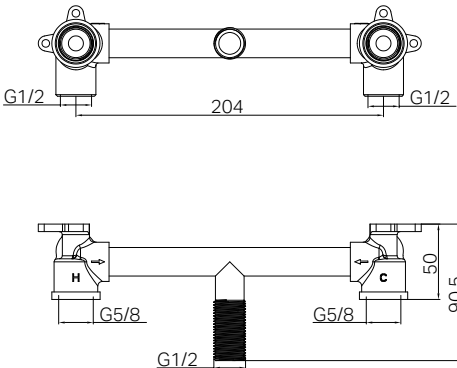
Nero



Version:202506



Drawing



Specifications

Watermark License
WM-060073
Temperature Rating
Min 1°C–Max75°C
Pressure Rating
Min 150kpa - Max 500kpa

Packaging Includes

1x In Wall Breech

*Dimensions are nominal measurements only.

INSTALLATION INSTRUCTIONS

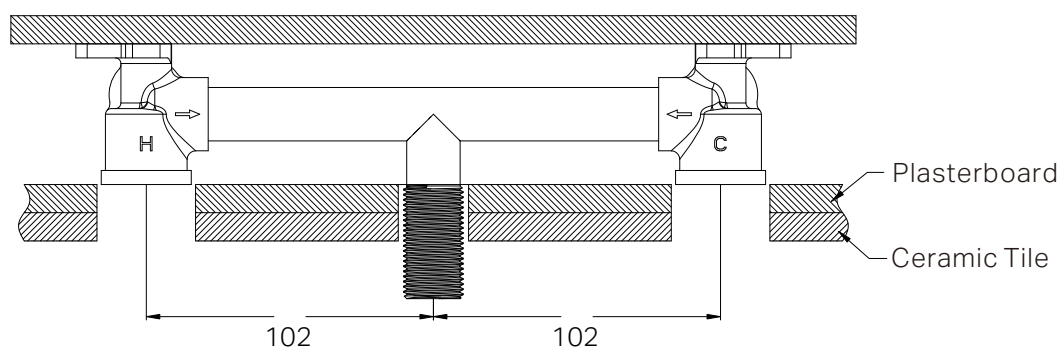
GENERAL INSTRUCTIONS

- NR5230071 is designed specifically for use with Nero X Plus, York, and Kara wall top assemblies. The trim kits that can be matched with NR5230071 are NR692107A, NR201607B, and NR211707A180.
- Installation must be carried out by a licensed plumber and must comply with AS/NZS 3500 plumbing regulations.
- Carefully inspect all components before installation. Do not proceed if any part is damaged or missing.
- Ensure the wall cavity has adequate structural support (nogging) for secure mounting.
- All pipe work must be thoroughly flushed prior to the installation of the breech.
- Always perform a water pressure test before closing the wall to confirm all joints are leak-free.

1. Secure the Breech

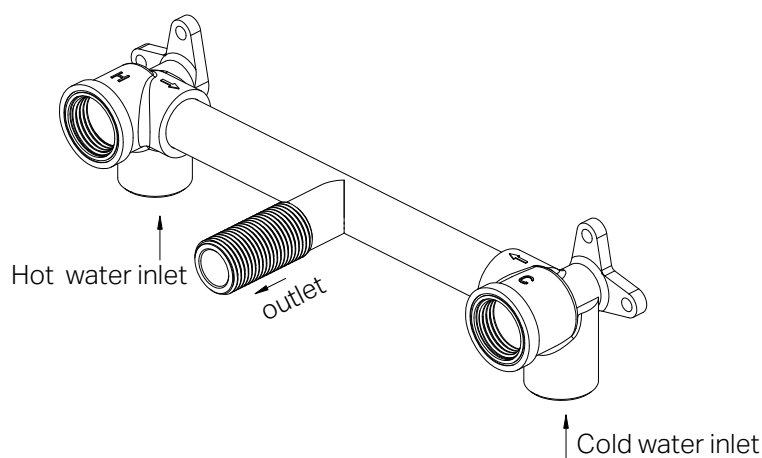
Fix the in-wall breech to a horizontal nogging.

Note: The installation depth must align with the specifications outlined in the matching wall top assembly instructions.



2. Connect Water Supplies

Connect the hot and cold inlet pipes to the corresponding G1/2" BSP threaded ports on the breech.



3. Pressure Test

Conduct a pressure test by turning on the water supply and checking for leaks at all joints. For future servicing, ensure spindles are removable and wall penetrations remain accessible.