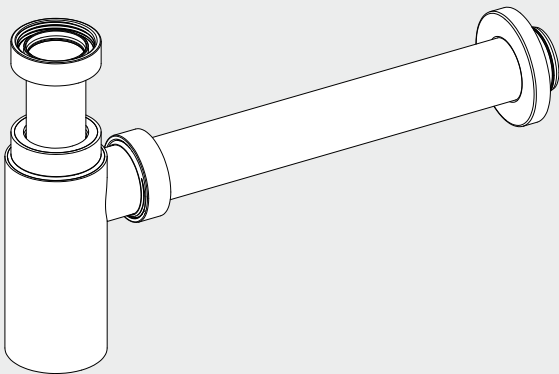


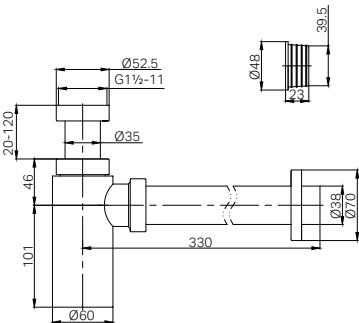
40mm Round Bottle Trap II

Nero



Versions:202503

Drawing



Specifications

SKU
25A001
Watermark License
WMK26021

Packaging Includes

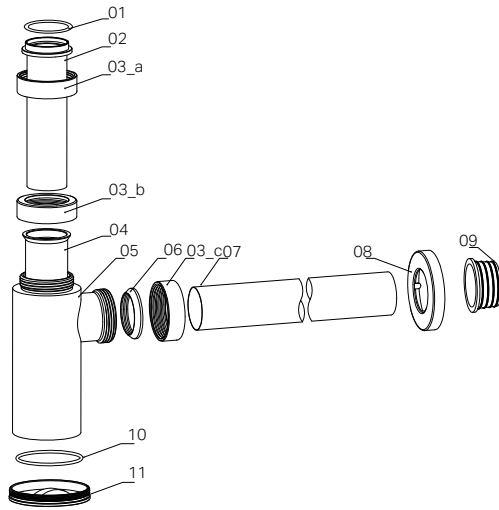
1x Bottle Trap

Finish

- | | | |
|--|---|---|
|  Chrome
25A001CH |  Gun Metal
25A001GM |  Brushed Bronze
25A001BZ |
|  Matte Black
25A001MB |  Brushed Gold
25A001BG |  Brushed Nickel
25A001BN |

*Dimensions are nominal measurements only

INSTALLATION INSTRUCTIONS



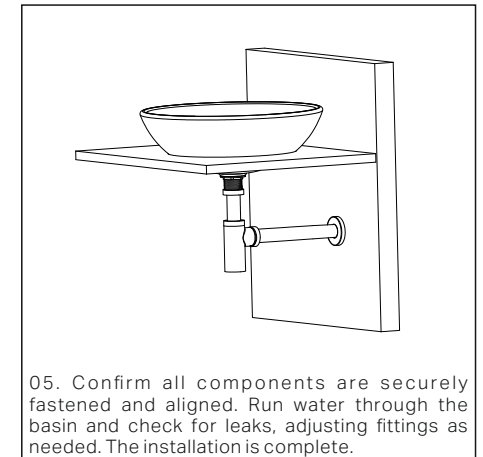
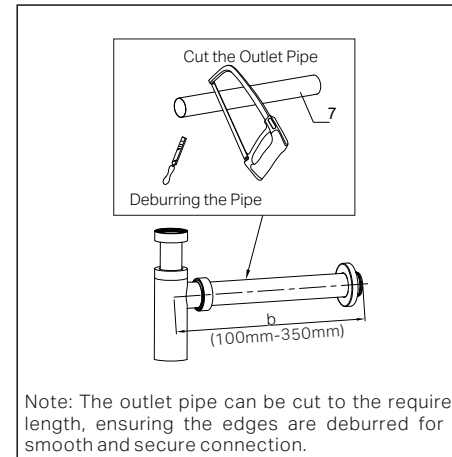
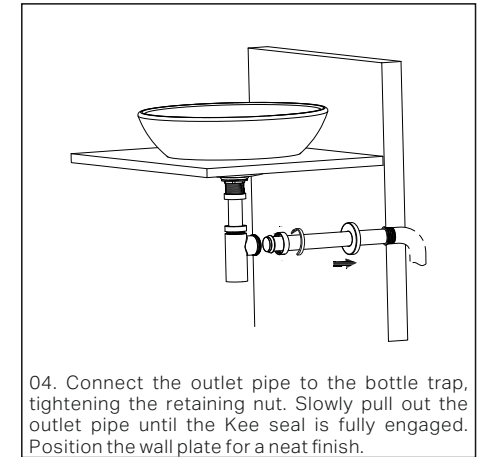
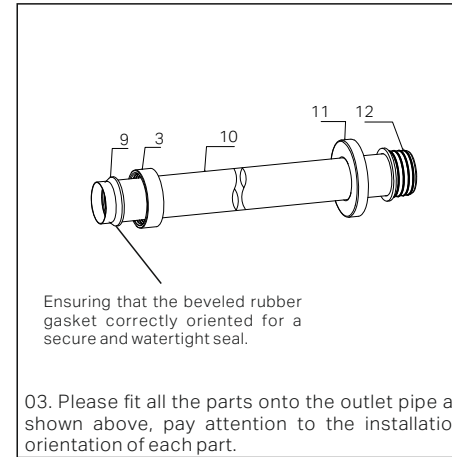
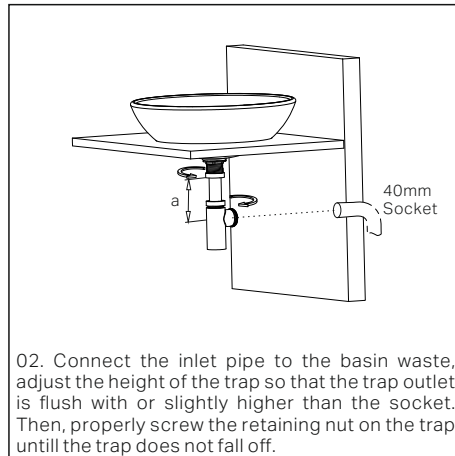
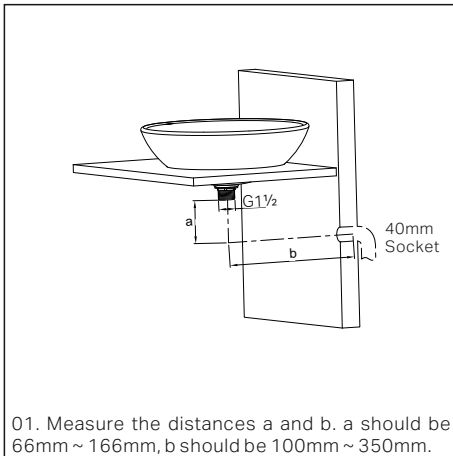
Parts Names

- 01 Rubber Washer x 1
- 02 Inlet Pipe x 1
- 03 Retaining Nut x 3
- 04 Protective Tube x 1
- 05 Bottle Trap x 1
- 06 Beveled Rubber Gasket x 1
- 07 Outlet Pipe x 1
- 08 Wall Plate x 1
- 09 Kee Seal x 1
- 10 O-ring x 1
- 11 Cap x 1

General Information & Compliance

- The 40mm Round Bottle Trap II suits 40mm Plug & Waste.
- The 40mm Round Bottle Trap II must be installed in compliance with AS/NZS 3500 and all relevant Australian plumbing regulations. Installation must be carried out by a licensed plumber to ensure proper functionality.

Installation Steps



Maintenance & Care

Routine Maintenance

- Regularly unscrew the trap access cap to remove accumulated debris and prevent blockages.
- Clean external surfaces using warm soapy water and a non-abrasive cloth to maintain the finish.
- Periodically check all seals, washers, and connections for wear or potential leaks.

Preventative Measures

- Avoid disposing of solid waste, grease, or hair into the drainage system to reduce the risk of clogs.
- Run water through the basin regularly to maintain the water seal and prevent odours from escaping.
- Ensure the Kee seal remains properly fitted to prevent leaks at the in-wall connection.

Nero

