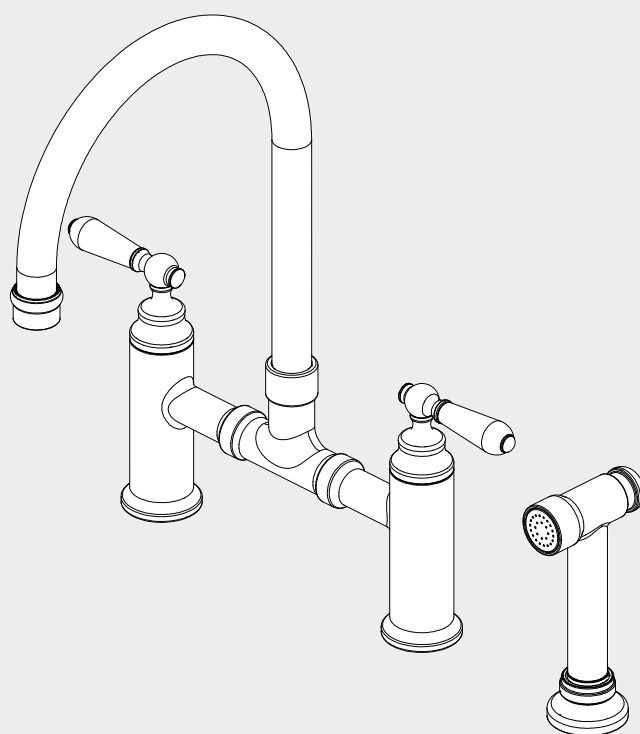


# York Bridge Pull Out Kitchen Set With Hand Spray

Nero



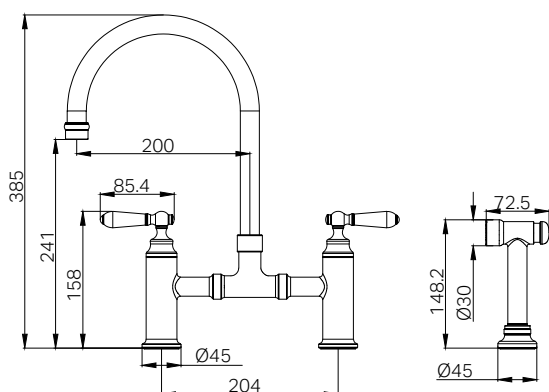
Lead Free



Versions:202505



## Drawing




## Specifications


**Watermark License**  
WM-060073  
**Temperature Rating**  
Min 1 °C - Max 75 °C  
**Pressure Rating**  
Min 150kpa - Max 500kpa

## Packaging Includes

1x Kitchen Mixer  
1x Hand Sprayer  
1x Installation Kit  
2x Flexible hoses

## Finish & SKU

 **Chrome**  
NR692108aCH

 **Matte Black**  
NR692108aMB

 **Aged Brass**  
NR692108aAB

 **Brushed Nickel**  
NR692108aBN

\*Dimensions are nominal measurements only.

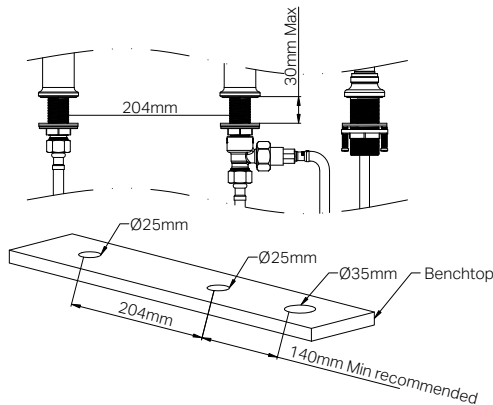
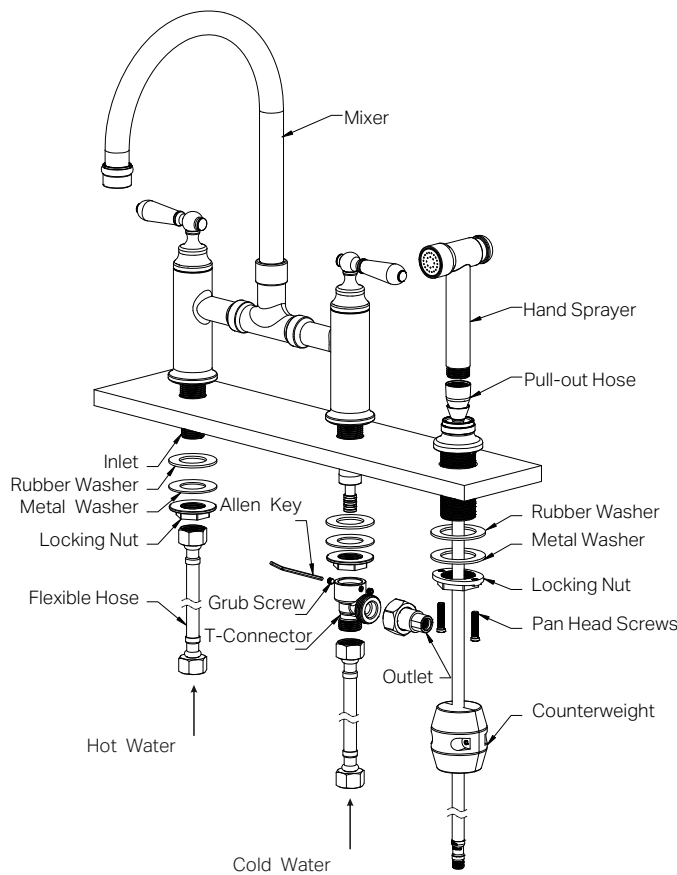
# Installation Instruction

**GENERAL INSTRUCTIONS:**

- This product must be installed by a licensed plumber. Ensure that the installation complies with the Australian / New Zeal and Standard AS/NZS 3500.
- All pipework must be thoroughly flushed prior to the installation of the mixer. In-line filters must be fitted on both hot and cold supplies to prevent foreign particles from damaging the hot and cold spindles.
- All outlets used primarily for personal hygiene must deliver water at a safe temperature in accordance with regional regulations.
- After installation, all connections must be checked for leaks.
- This mixer is not recommended for use in uncontrolled heating systems such as wet-backs or solar heating units unless a suitable tempering valve is fitted.
- If limited water flow is experienced, locate aerator and filter washers and clean away foreign material as required.

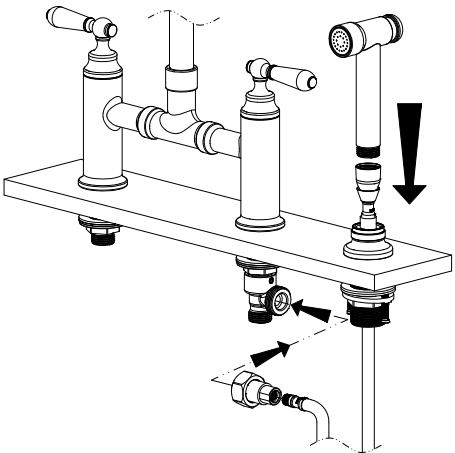
**MAINTENANCE AND CARE:**

- Regularly check the mixer and connections for signs of wear or leaks.
- Clean the tap with mild soapy water to maintain its appearance, avoiding harsh chemicals and abrasive materials that may damage the finish.



**STEP 01**

Drill two Ø25mm holes for the mixer legs and one Ø35mm hole for the hand sprayer. Ensure the surface thickness is between 3mm–30mm.



**STEP 03**

Connect the pull-out hose to the hand sprayer, feed it through the base, and secure it to the quick connector, then to the T-connector. Tighten all connections.

**STEP 05**

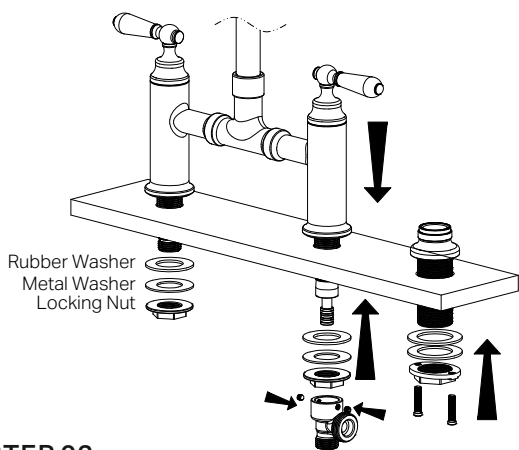
Connect the hot and cold hoses to their respective water supply valves. Tighten the Female cone nuts by hand. Ensuring they are secure yet not overtightened to avoid thread damage.

**STEP 06**

Check all connections for leaks. If any fittings are leaking, shut off the water as necessary to stop the leaks. Contact the supplier for warranty claim. Refer to warranty page.

**FINAL INSPECTION:**

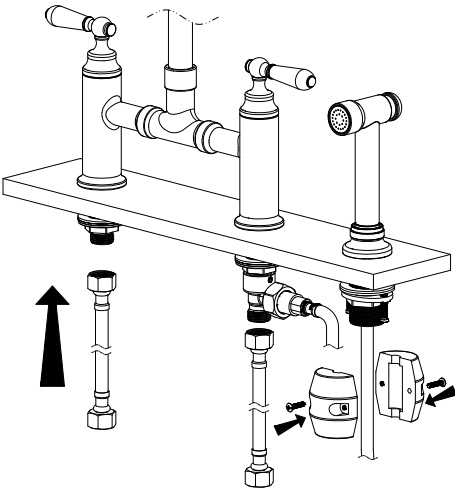
- Ensure the tap operates smoothly.
- Clean the area and the newly installed tap with a soft cloth to remove any installation residues.



**STEP 02**

Insert the mixer body and hand spray base into the holes.

From underneath the bench, use the supplied washers and locking nuts to secure the mixer. Attach the T-connector onto the cold inlet using the grub screws and Allen key.



**STEP 04**

Connect the hot and cold flexi hose. Attach the counterweight to the pull-out hose, positioning it approximately 35cm below the benchtop for smooth retraction.

# Nero

