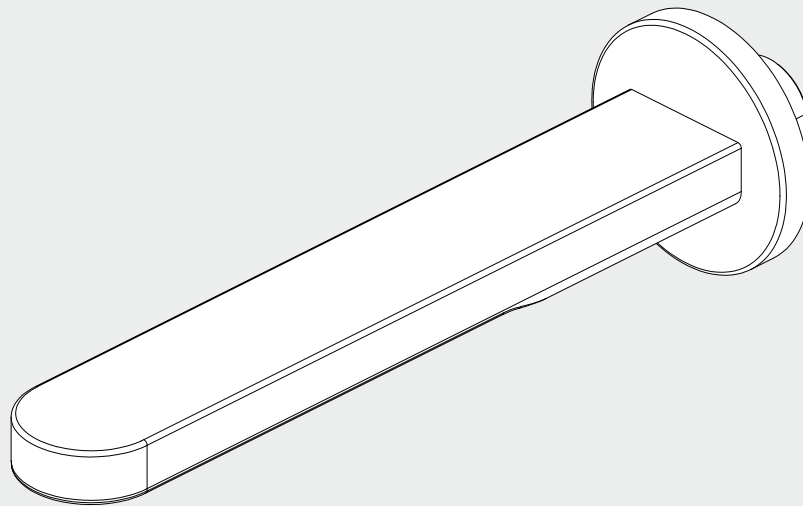


Pure SS316L Round Bath Spout Only

Nero



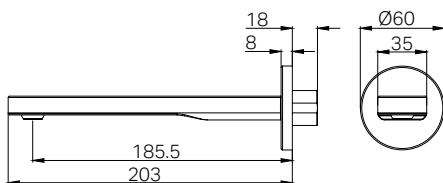
Lead Free



Version:202506



Drawing



Specifications

Watermark License

WM-060073

Temperature Rating

Min 1°C-Max 75°C

Pressure Rating

Min 150kpa - Max 500kpa

Finish & SKU

Brushed Bronze
NR172203BZ

Brushed Gold
NR172203BG

Graphite
NR172203GR

Brushed Nickel
NR172203BN

Packaging Includes

1x Spout
1x Plate
1x Aerator Spanner
1x Non-Restrictive Aerator

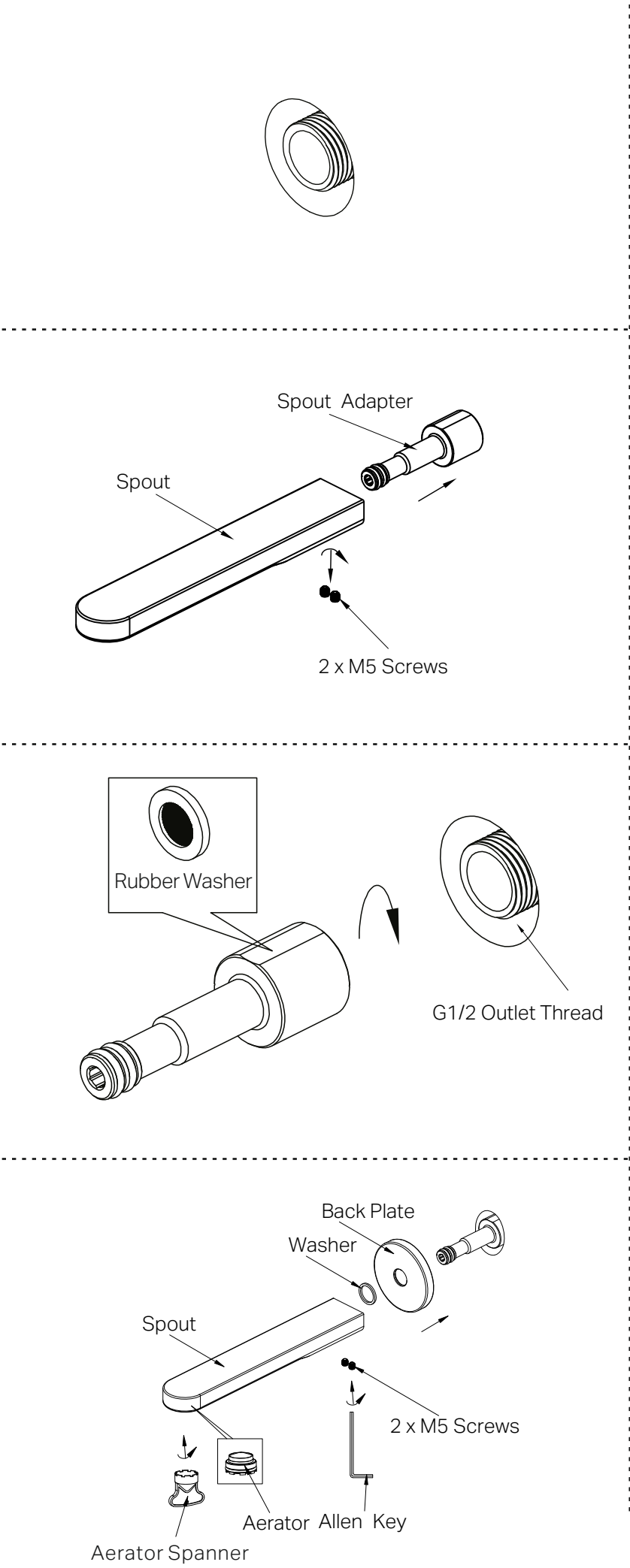
*Dimensions are nominal measurements only.

*Includes an additional non-restrictive aerator for bath use.

Installation Instruction

GENERAL INSTRUCTIONS:

- This product must be installed by a licensed plumber. Ensure that your plumbing installation complies with the Australian/New Zealand Standard AS/NZS 3500.
- All pipework must be thoroughly flushed prior to the installation of the mixer. In-line filters must be fitted on both hot and cold supplies to prevent foreign particles from damaging the ceramic cartridge.
- All outlets used primarily for personal hygiene must deliver water at a safe temperature in accordance with regional regulations.



1. Trim the G1/2 outlet thread to be flush with the finished wall surface.

2. Unscrew the 2 x M5 screws, and then remove the G1/2 spout adapter from the spout.

3. Attach the G1/2 spout adapter to the outlet thread, ensuring that the rubber washer is properly seated inside the adapter as illustrated in the figure.

4. Fit the back plate onto the spout adapter.
5. Place the ABS washer against the backplate.
6. Push the spout onto the spout adapter and secure it by tightening the two grub screws on the underside of the spout using an Allen key. (Ensure the screws are tightened firmly but do not over-tighten.)

Note:

The accessory bag includes an unrestricted aerator and an aerator spanner. If you prefer to use the unrestricted aerator, you can use the spanner to replace the existing aerator.

MAINTENANCE AND CARE:

- Regularly check the mixer and connections for signs of wear or leaks.
- Clean the tap with mild soapy water to maintain its appearance, avoiding harsh chemicals and abrasive materials that may damage the finish.

FINAL INSPECTION:

- Ensure the tap operates smoothly and that there are no leaks at the connections.
- Clean the area and the newly installed tap with a soft cloth to remove any installation residues.

Nero

