

Mecca

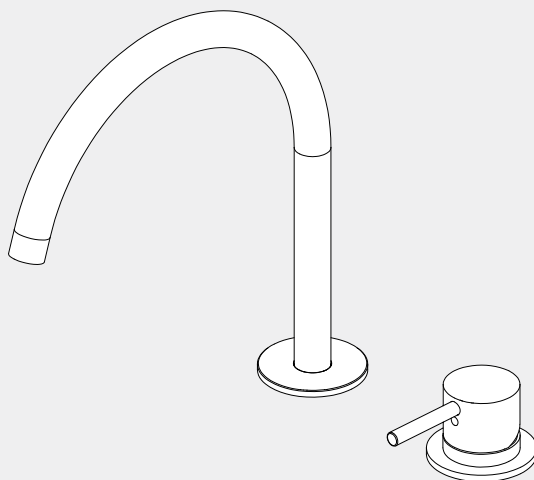
Hob Bath/Kitchen Mixer Set

Arc Spout

Nero

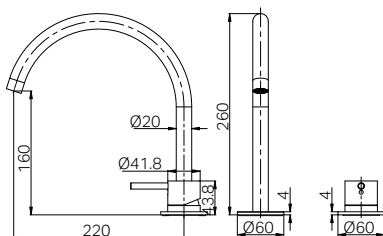


Lead Free



Versions:202511

Drawing



Specifications

Watermark License

WM-060073

Temperature Rating

Min 1 °C - Max 75 °C

Pressure Rating

Min 150 kpa - Max 500 kpa

Packaging Includes

1x Spout Set
1x Handle Set
(including 3 flexible hoses)
1x Installation Kits

Finish & SKU

	Brushed Bronze NR221901jBZ		Matte Black NR221901jMB		Chrome NR221901jCH
	Brushed Gold NR221901jBG		Brushed Nickel NR221901jBN		Gun Metal NR221901jGM
	Matte White NR221901jMW				

*Dimensions are nominal measurements only.

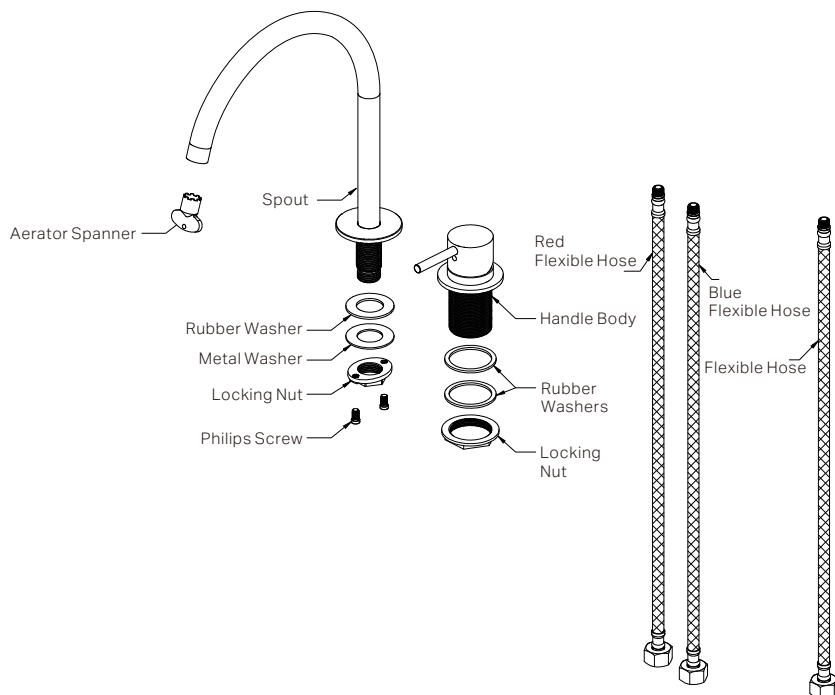
INSTALLATION INSTRUCTIONS

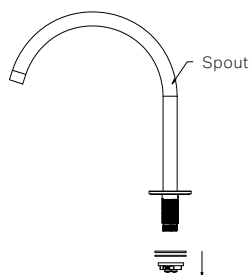
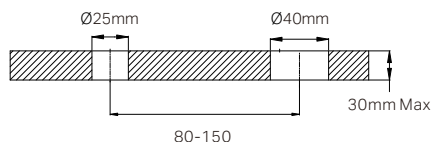
GENERAL INSTRUCTIONS:

- This product must be installed by a licensed plumber. Ensure that the installation complies with the Australian / New Zealand Standard AS/NZS 3500.
- All pipework must be thoroughly flushed prior to the installation of the mixer. In-line filters must be fitted on both hot and cold supplies to prevent foreign particles from damaging the ceramic cartridge.
- All outlets used primarily for personal hygiene must deliver water at a safe temperature in accordance with regional regulations.
- After installation, all connections must be checked for leaks.
- This mixer is not recommended for use in uncontrolled heating systems such as wet-backs or solar heating units unless a suitable tempering valve is fitted.
- If limited water flow is experienced, locate aerator and filter washers and clean away foreign material as required.

MAINTENANCE AND CARE:

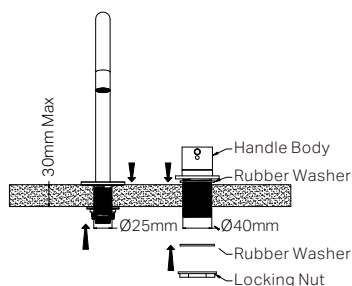
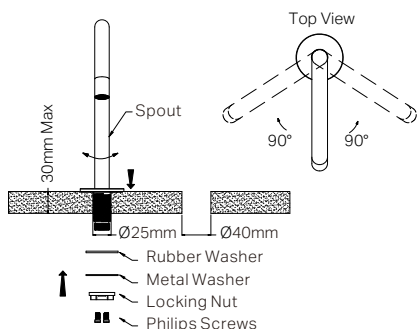
- Regularly check the mixer and connections for signs of wear or leaks.
- Clean the tap with mild soapy water to maintain its appearance, avoiding harsh chemicals and abrasive materials that may damage the finish.





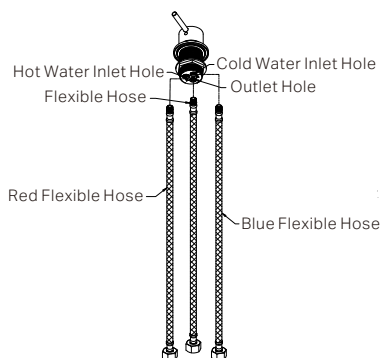
1. Cut holes on the benchtop according to the dimensions shown in the diagram. The distance between the two holes should be 80–150 mm, and the benchtop thickness must not exceed 30 mm.

2. Remove the locking nut, metal washer, and rubber washer from the spout.

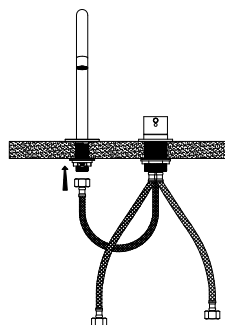


3. Rotate the spout to the midpoint of its 180° swivel range. Insert the spout into the Ø25 mm mounting hole and align it towards the basin. Secure the spout from underneath as shown in the diagram above.

4. Insert the handle body through the Ø40 mm hole (ensure the rubber washer is positioned between the handle and benchtop). Fit the rubber washer and locking nut underneath the benchtop, then tighten securely to hold the handle in place.



5. Install the three different flexible hoses into the corresponding holes on the handle body as shown in the diagram. Red-H, Blue-C.



6. Connect the flexible hoses to the spout assembly. The red and blue flexible hoses should be connected to the angle valves.

Nero

