

# Mecca

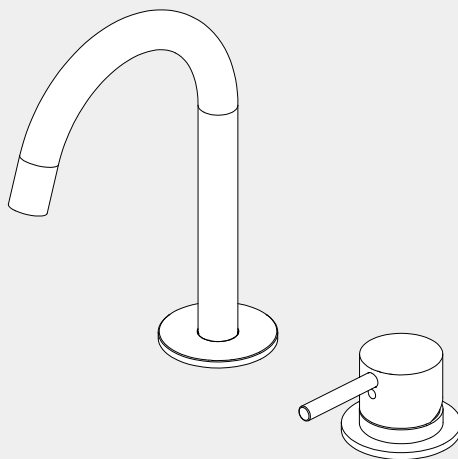
## Hob Basin Mixer Set

### Arc Spout

Nero

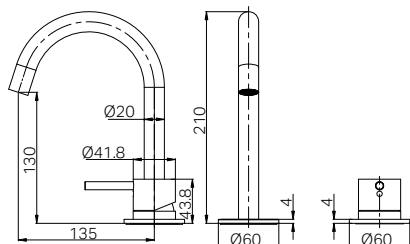


Lead Free



Versions:202511

#### Drawing



#### Specifications

##### Watermark License

WM-060073

##### Temperature Rating

Min 1 °C - Max 75 °C

##### Pressure Rating

Min 150 kpa - Max 500 kpa

#### Packaging Includes

1x Spout  
1x Handle  
(including 3 flexible hoses)  
1x Installation Kits

#### Finish & SKU

	<b>Brushed Bronze</b> NR221901gBZ		<b>Matte Black</b> NR221901gMB		<b>Chrome</b> NR221901gCH
	<b>Brushed Gold</b> NR221901gBG		<b>Brushed Nickel</b> NR221901gBN		<b>Gun Metal</b> NR221901gGM
	<b>Matte White</b> NR221901gMW				

\*Dimensions are nominal measurements only.

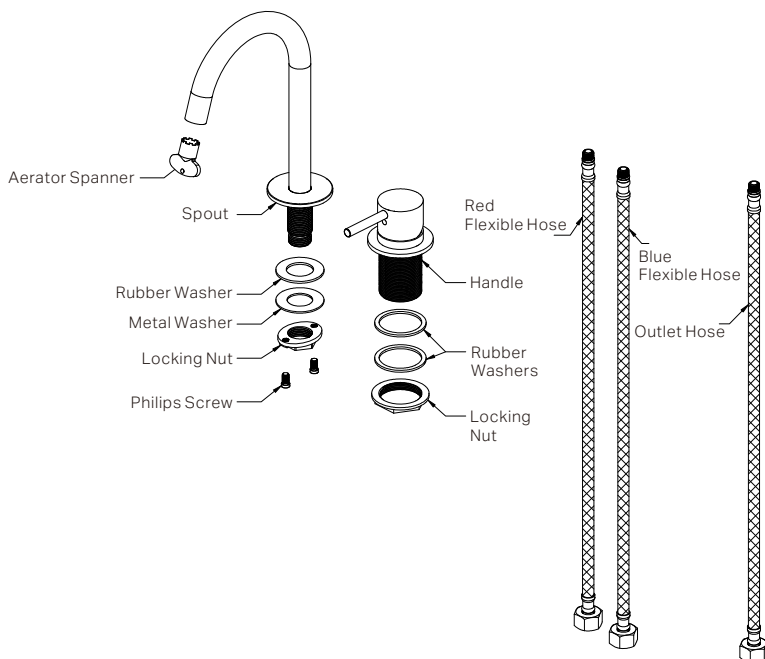
## INSTALLATION INSTRUCTIONS

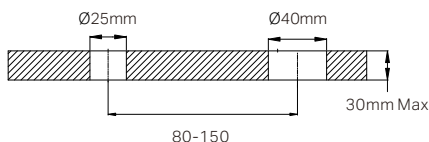
### GENERAL INSTRUCTIONS:

- This product must be installed by a licensed plumber. Ensure that the installation complies with the Australian / New Zealand Standard AS/NZS 3500.
- All pipework must be thoroughly flushed prior to the installation of the mixer. In-line filters must be fitted on both hot and cold supplies to prevent foreign particles from damaging the ceramic cartridge.
- All outlets used primarily for personal hygiene must deliver water at a safe temperature in accordance with regional regulations.
- After installation, all connections must be checked for leaks.
- This mixer is not recommended for use in uncontrolled heating systems such as wet-backs or solar heating units unless a suitable tempering valve is fitted.
- If limited water flow is experienced, locate aerator and filter washers and clean away foreign material as required.

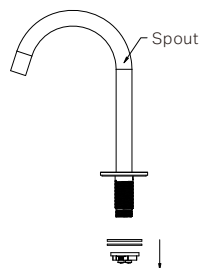
### MAINTENANCE AND CARE:

- Regularly check the mixer and connections for signs of wear or leaks.
- Clean the tap with mild soapy water to maintain its appearance, avoiding harsh chemicals and abrasive materials that may damage the finish.

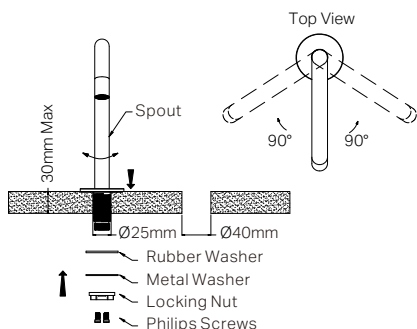




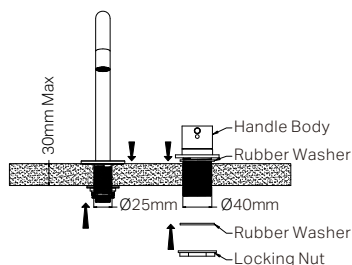
1. Drill two holes in the benchtop (Ø25 mm and Ø40 mm) with spacing of 80–150 mm. Ensure bench thickness ≤30 mm.



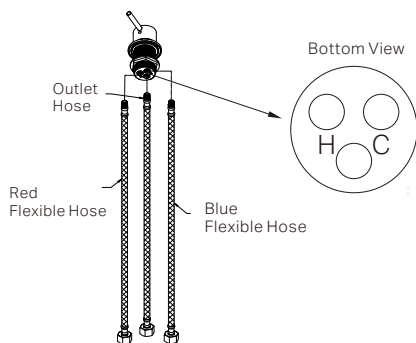
2. Remove the locking nut, metal washer, and rubber washer from the spout.



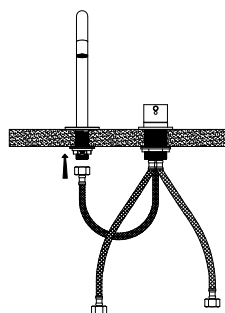
3. Rotate the spout to the midpoint of its 180° swivel range. Insert the spout into the Ø25 mm mounting hole and align it towards the basin. Secure the spout from underneath as shown in the diagram above.



4. Insert the handle body through the Ø40 mm hole (ensure the rubber washer is positioned between the handle and benchtop). Fit the rubber washer and locking nut underneath the benchtop, then tighten securely to hold the handle in place.



5. Install the three different flexible hoses into the corresponding holes on the handle body as shown in the diagram. Red-H, Blue-C.



6. Connect the outlet hose to the spout. Ensure the red and blue flexible hoses are attached to the hot and cold angle valves.

Nero

