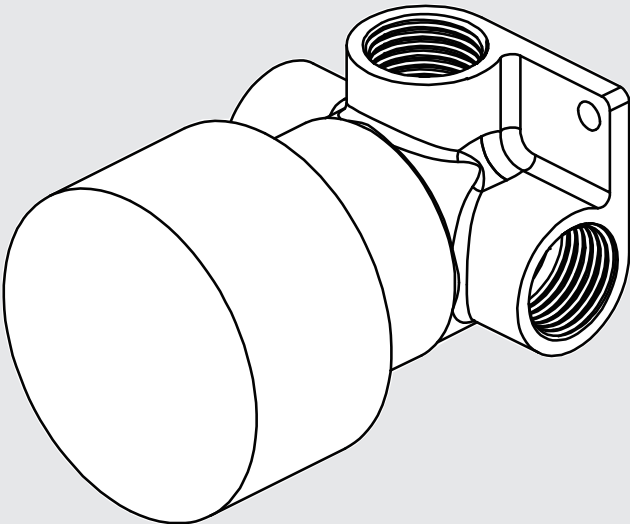


Kara Progressive  
Shower Mixer

Nero

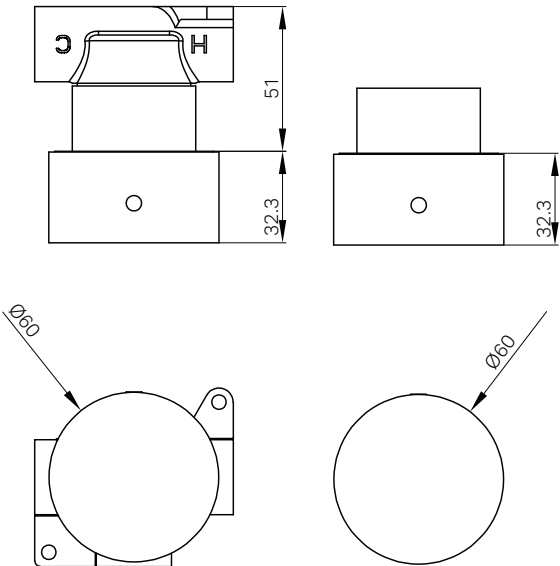


Lead Free



Versions:202506

Top/Back



Specifications

**SKU**  
NR271909

**Watermark License**  
WM-060073

**Temperature Rating**  
Min 1°C-Max 75°C

**Pressure Rating**  
Min 150kpa - Max 500kpa

Group Item

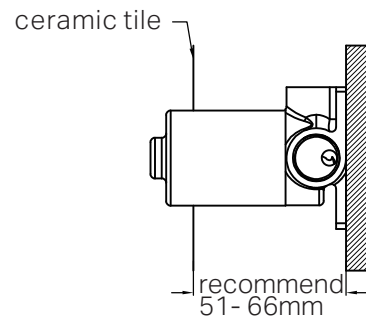
1x Universal Body  
1x Trim Kits Only

Finish

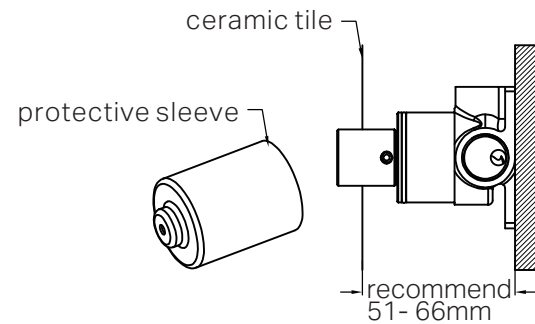
- |  |   |   |
|--|---|---|
|  <b>Chrome</b><br>NR271909CH      |  <b>Gun Metal</b><br>NR271909GM    |  <b>Brushed Bronze</b><br>NR271909BZ |
|  <b>Matte Black</b><br>NR271909MB |  <b>Brushed Gold</b><br>NR271909BG |  <b>Brushed Nickel</b><br>NR271909BN |

\*Dimensions are nominal measurements only.

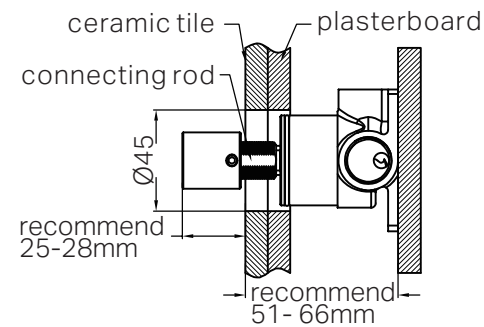
# Installation Instruction For Body



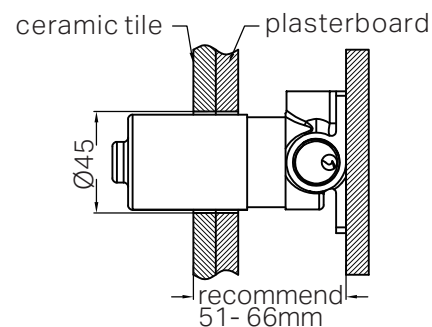
1. Fix body on nogging and ensure installation depth is 51-66mm from nogging to ceramic tile.



2. Take off protective sleeve.

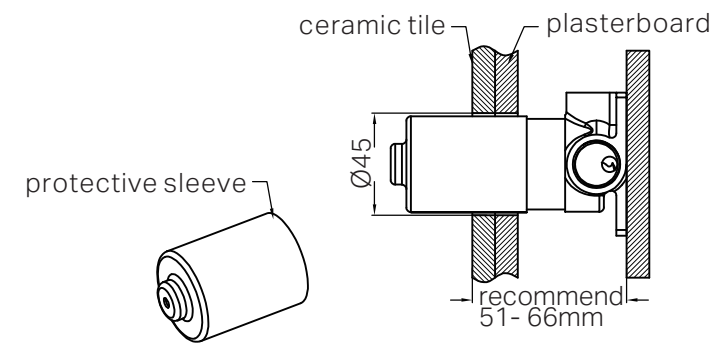


3. Adjust connecting rod and ensure depth is 25-28mm from the front of adaptor to ceramic tile. Drill a  $\phi 45$  hole on plasterboard and ceramic tile for the body, according to above picture. Then install plasterboard and do waterproof for the whole plasterboard. Install ceramic tile.

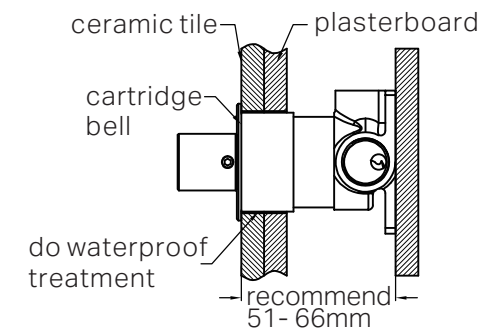


4. Install protective sleeve back to the body.

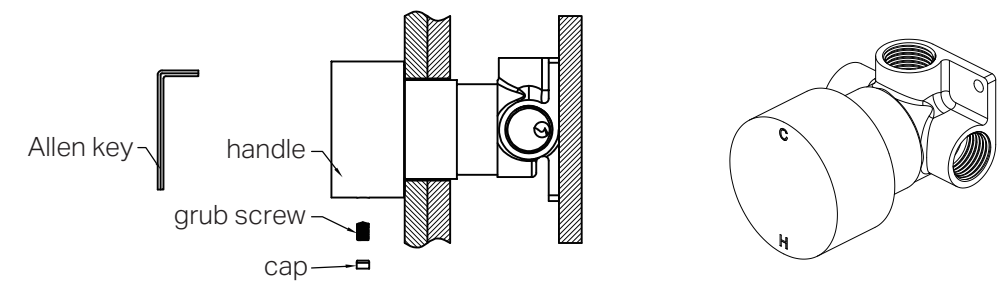
# Installation Instruction For Trim Kits



1. Remove protective sleeve.



2. Put cartridge bell onto body and do waterproof treatment for the gap between cartridge bell and plasterboard and ceramic tile.



3. Make hand wheel into connecting rod, turn the hand wheel counterclockwise to the end. Then reinstall the hand wheel, make the "C" should be on twelve o'clock direction and "H" on the six o'clock direction, according to above picture. Then tighten grub screw of hand wheel by allen key, put cap into hand wheel.

# Nero

