

Celia

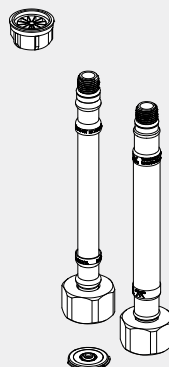
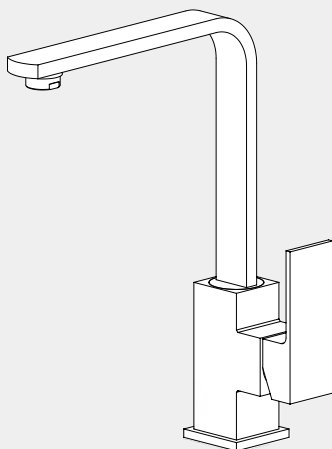
Kitchen Mixer Builders Range

All Pressure

Nero

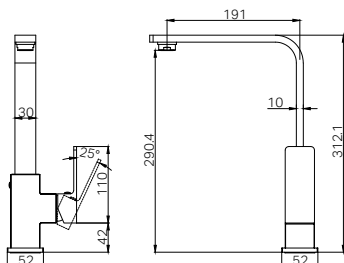


Lead Free



Version : 202506

Drawing



Specifications

Watermark License
WM-060073
Temperature Rating
Min 1 °C - Max 75 °C
Pressure Rating
Min 35kpa - Max 500kpa

Finish & SKU

Chrome
NRA301506CH

Matte Black
NRA301506MB

Brushed Nickel
NRA301505BN

Packing Includes

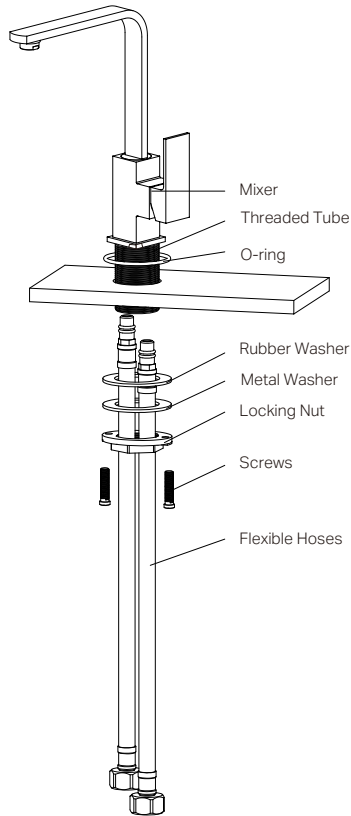
1x Kitchen Mixer
1x Base Ring
2x Flexible Hose
1x Triangle Plate
1x Installation Kit
1x Basin/Kitchen Mixer Low Pressure Kit I

*Dimensions are nominal measurements only.

INSTALLATION INSTRUCTIONS

GENERAL INSTRUCTIONS:

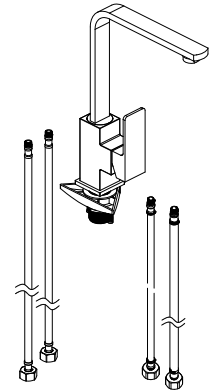
This product is designed for use with all pressure systems, including low pressure installations (minimum 35kPa).
Installation must be carried out by a licensed plumber and must comply with AS/NZS 3500.
All pipework must be flushed before installation to remove debris.
Fit in-line filters on both hot and cold water inlets to protect the ceramic cartridge.
Do not pressure test the system with the mixer installed.
Do not remove the ceramic cartridge during installation.
After installation, check all joints for leaks and ensure smooth operation.
A tempering valve must be installed when used with solar or wet-back hot water systems.
If flow is restricted, clean the aerator and filter washers.
Ensure a waterproof seal is achieved between the mixer and mounting surface.
Flexible hoses are fixed and must not be replaced with non-original parts.
All hygiene outlets must deliver water at a safe temperature in accordance with local regulations.



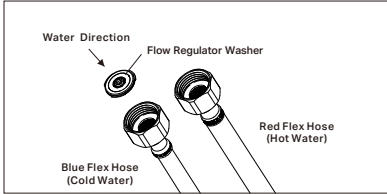
PRE-INSTALL

Flexible Hose Selection

This product includes two sets of flexible hoses to accommodate different water pressure systems. Ensure the correct hose is selected based on the site's water pressure conditions.
1. For low-pressure applications, use the flexible hoses supplied in the kraft paper packaging.
2. For mains-pressure applications, use the flexible hoses supplied in the clear packaging.



Basin/Kitchen Mixer Low Pressure Kit I



NOTE:
1. The Blue Flex Hose with a Flow Regulator Washer inside is for cold water, while the red one is for hot water.
2. Ensure the side with the O-ring is positioned facing up.

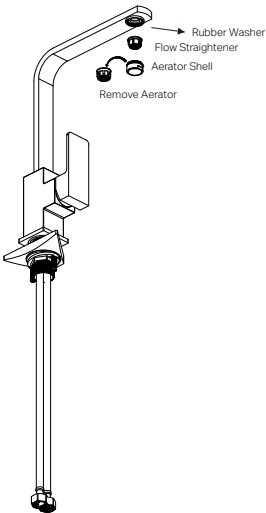
Aerator Replacement

When low-pressure hoses are used, the factory-installed aerator must be replaced with the flow straightener included separately in the kit.

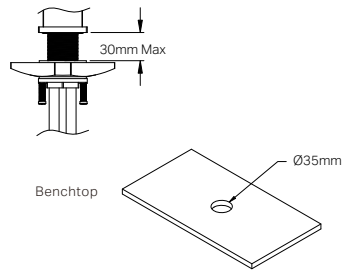
1. Remove the pre-installed aerator from the spout.
2. Fit the flow straightener into the aerator shell as shown in the installation diagram, be careful not to drop the original rubber washer from the spout.

NOTE:

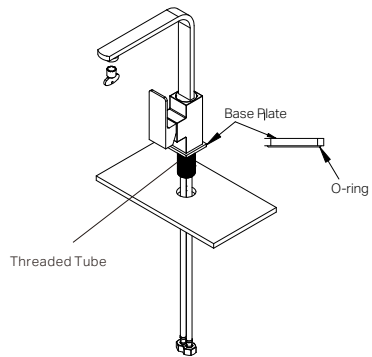
Using the correct combination of flexible hoses and aerator is essential to ensure proper flow performance.



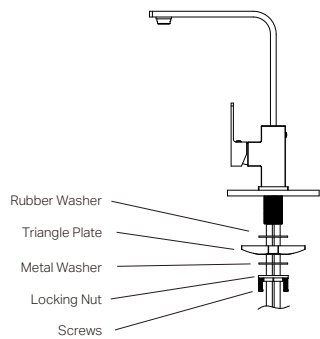
INSTALL THE MIXER



01. Pre-drill or create a **Mounting Hole** with a diameter of 35mm in the **Benchtop**. Please note that the **Benchtop** thickness should not exceed 30mm if **Triangle Plate** is added, otherwise, it can reach up to 40mm.



02. Attach the **Base Plate**, **Threaded Tube** to **Mixer Body** and screw the **Flexible Hoses** into the bottom of the **Mixer Body**.
NOTE: Ensuring the **O-ring** sits within the bottom groove of the **Base Plate** to prevent water leakage.



03. Fit the **Rubber Washer** (**Triangle Plate** if needed) and **Metal Washer** over the **Threaded Tube**, secure the **Mixer** firmly to the **Benchtop** by tightening **Screws** onto **Locking Nut**.

4. Connect the **Flexible Hoses** to the corresponding **Hot and Cold Water Supply Valves**.
5. Check all connections for leaks. If any fittings are leaking, shut off the water as necessary to stop the leaks. Contact the supplier for warranty claim.

MAINTENANCE AND CARE:

- Regularly check the mixer and connections for signs of wear or leaks.
- Clean the tap with mild soapy water to maintain its appearance, avoiding harsh chemicals and abrasive materials.

Nero

