

Celia

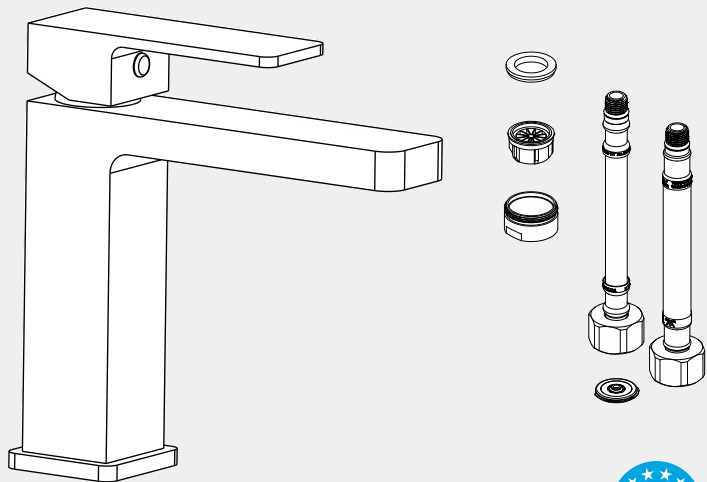
Basin Mixer Builders Range

All Pressure

Nero



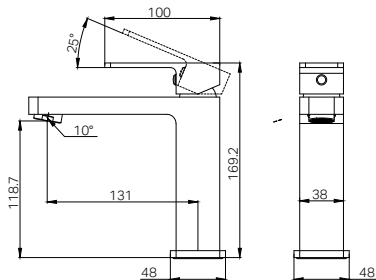
Lead Free



Version : 202506



Drawing



Specifications

Watermark License
WM-060073
Temperature Rating
Min 1 °C - Max 75 °C
Pressure Rating
Min 35kpa - Max 500kpa

Finish & SKU

 **Chrome**
NRA301502CH

 **Matte Black**
NRA301502MB

 **Brushed Nickel**
NRA301502BN

Packing Includes

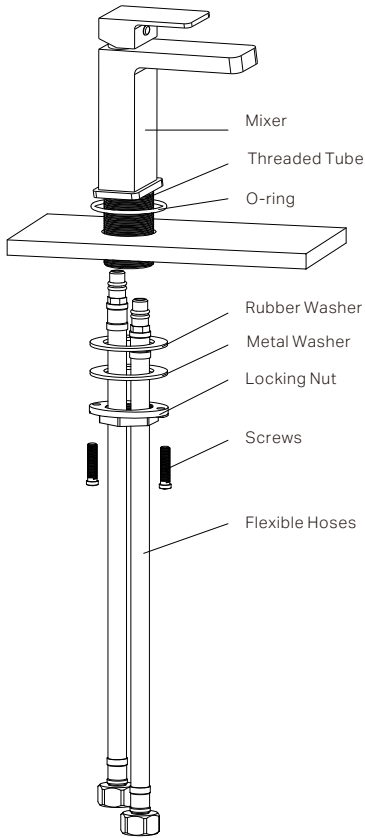
- 1x Basin Mixer
- 1x Base Plate
- 2x Flexible Hose
- 1x Installation Kits
- 1x Basin/Kitchen Mixer Low Pressure Kit II

*Dimensions are nominal measurements only.

INSTALLATION INSTRUCTIONS

GENERAL INSTRUCTIONS:

This product is designed for use with all pressure systems, including low pressure installations (minimum 35kPa).
Installation must be carried out by a licensed plumber and must comply with AS/NZS 3500.
All pipework must be flushed before installation to remove debris.
Fit in-line filters on both hot and cold water inlets to protect the ceramic cartridge.
Do not pressure test the system with the mixer installed.
Do not remove the ceramic cartridge during installation.
After installation, check all joints for leaks and ensure smooth operation.
A tempering valve must be installed when used with solar or wet-back hot water systems.
If flow is restricted, clean the aerator and filter washers.
Ensure a waterproof seal is achieved between the mixer and mounting surface.
Flexible hoses are fixed and must not be replaced with non-original parts.
All hygiene outlets must deliver water at a safe temperature in accordance with local regulations.

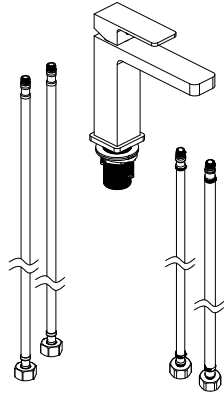


PRE-INSTALL

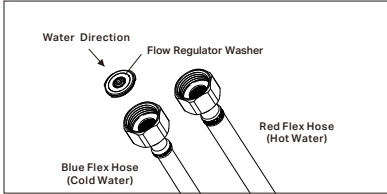
Flexible Hose Selection

This product includes two sets of flexible hoses to accommodate different water pressure systems. Ensure the correct hose is selected based on the site's water pressure conditions.

- 1. For low-pressure applications, use the flexible hoses supplied in the kraft paper packaging.
- 2. For mains-pressure applications, use the flexible hoses supplied in the clear packaging.



Basin/Kitchen Mixer Low Pressure Kit II



NOTE:
1. The Blue Flex Hose with a Flow Regulator Washer inside is for cold water, while the red one is for hot water.
2. Ensure the side with the O-ring is positioned facing up.

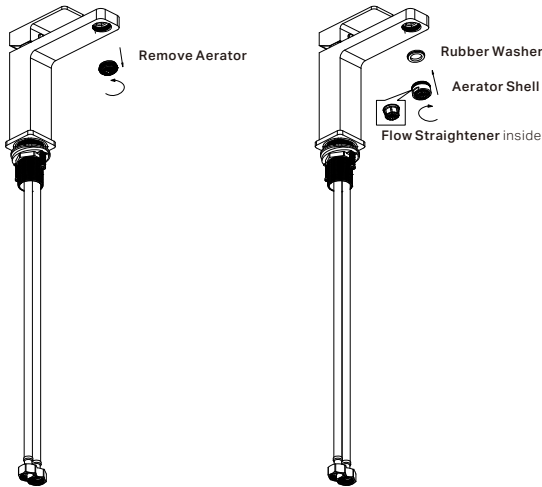
Aerator Replacement

When low-pressure hoses are used, the factory-installed aerator must be replaced with the flow straightener included separately in the kit.

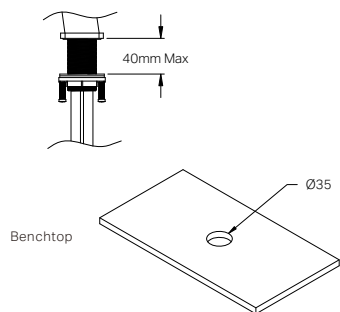
- 1. Remove the pre-installed aerator from the spout.
- 2. Fit the flow straightener into the aerator shell as shown in the installation diagram.

NOTE:

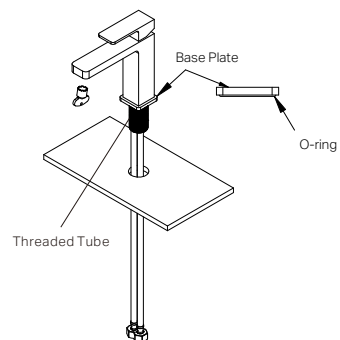
Using the correct combination of flexible hoses and aerator is essential to ensure proper flow performance.



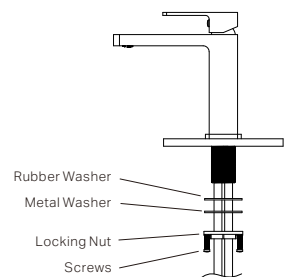
INSTALL THE MIXER



01. Pre-drill or create a **Mounting Hole** with a diameter of 35mm in the **Benchtop**. Please note that the **Benchtop** thickness should not exceed 40mm.



02. Attach the **Base Plate**, **Threaded Tube** to **Mixer Body** and screw the **Flexible Hoses** into the bottom of the **Mixer Body**.
NOTE: Ensuring the **O-ring** sits within the bottom groove of the **Base Plate** to prevent water leakage.



03. Fit the **Rubber Washer** and **Metal Washer** over the **Threaded Tube**, secure the **Mixer** firmly to the Benchtop by tightening **Screws** onto **Locking Nut**.

4. Connect the **Flexible Hoses** to the corresponding **Hot and Cold Water Supply Valves**.
5. Check all connections for leaks. If any fittings are leaking, shut off the water as necessary to stop the leaks. Contact the supplier for warranty claim.

MAINTENANCE AND CARE:

- Regularly check the mixer and connections for signs of wear or leaks.
- Clean the tap with mild soapy water to maintain its appearance, avoiding harsh chemicals and abrasive materials.

Nero

