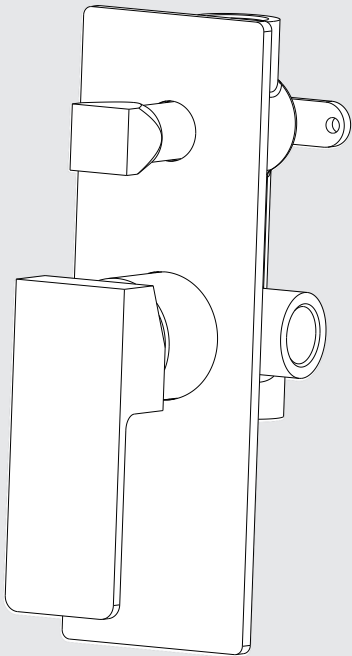


Celia Shower Mixer With Divertor

Nero



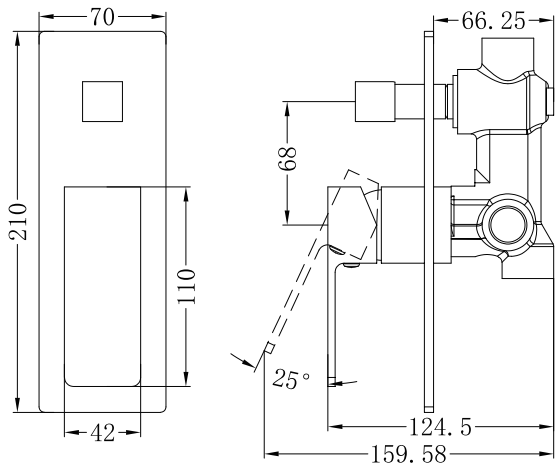
Lead Free



100 543

Versions:202506

Drawing



Specifications

Watermark License
WM-060073
Temperature Rating
Min 1°C-Max 75°C
Pressure Rating
Min 150kpa - Max 500kpa

Packaging Includes

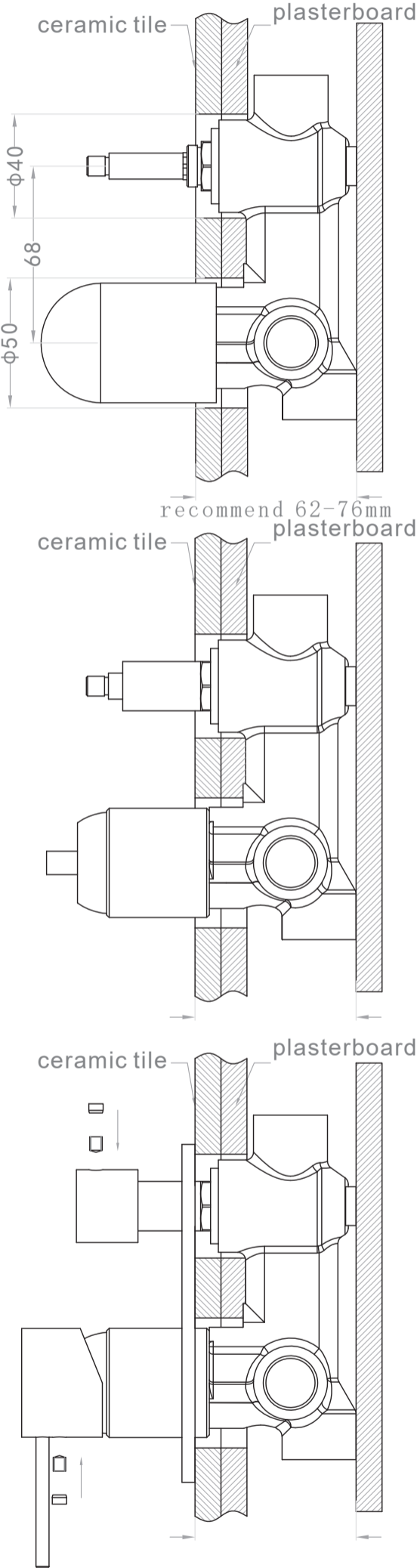
- 1x Mixer Body
- 1x Handle
- 1x Plate
- 1x Diverter
- 1x Installation Kit

Finish & SKU

- Chrome NR301509aCH
- Matte Black NR301509aMB
- Brushed Nickel NR301509aBN

*Dimensions are nominal measurements only.

Installation Instruction



1. Fix body on noggin and ensure installation depth is 62-76mm from noggin to ceramic tile.
2. Connect cold water hose and hot water hose and test for leakage.
3. Install plasterboard and ceramic tile after drilling a $\phi 50$ and a $\phi 40$ hole according to the right drawing.

4. Remove the plastic sleeve and install sleeve of divertor.

5. Install plate, handle and knob.

Nero

