

Bianca

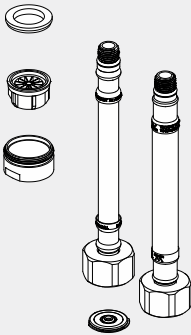
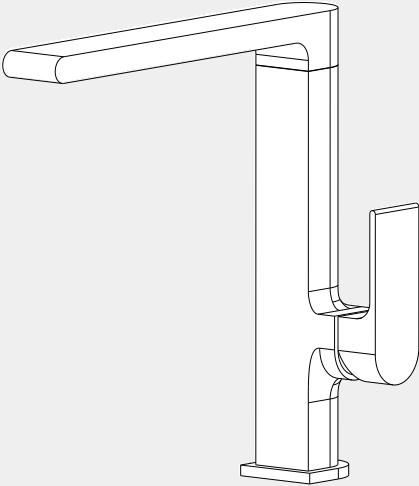
Kitchen Mixer

All Pressure

Nero

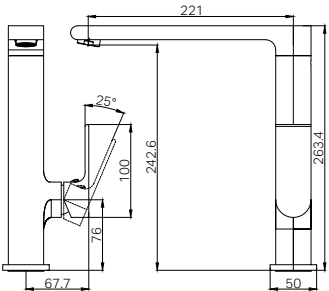


Lead Free



Version : 202506

Drawing



Specifications

Watermark License
WM-060073
Temperature Rating
Min 1 °C - Max 75 °C
Pressure Rating
Min 35kpa - Max 500kpa

Finish & SKU

 **Chrome**
NRA321507CH

 **Matte Black**
NRA321507MB

 **Brushed Nickel**
NRA321507BN

Packing Includes

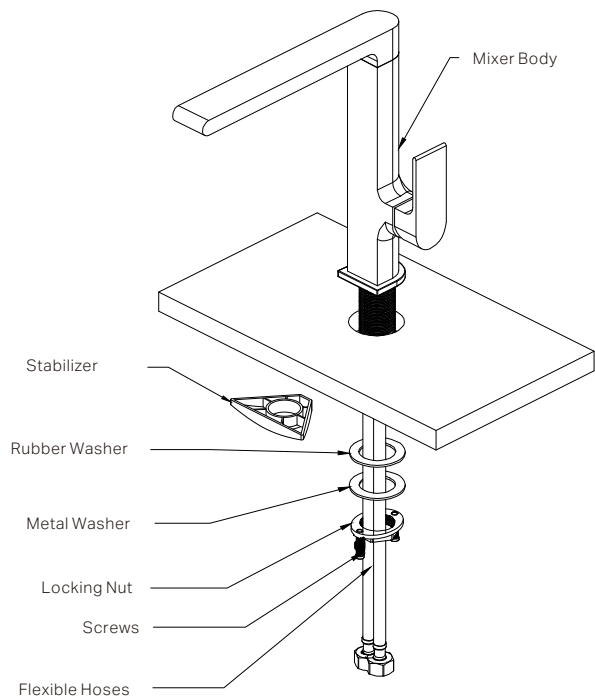
- 1x Kitchen Mixer
- 2x Flexible Hoses
- 1x Installation Kits
- 1x Base Ring
- 1x Stabilizer
- 1x Basin/Kitchen Mixer Low Pressure Kit II

*Dimensions are nominal measurements only.

INSTALLATION INSTRUCTIONS

GENERAL INSTRUCTIONS:

This product is designed for use with all pressure systems, including low pressure installations (minimum 35kPa).
 Installation must be carried out by a licensed plumber and must comply with AS/NZS 3500.
 All pipework must be flushed before installation to remove debris.
 Fit in-line filters on both hot and cold water inlets to protect the ceramic cartridge.
 Do not pressure test the system with the mixer installed.
 Do not remove the ceramic cartridge during installation.
 After installation, check all joints for leaks and ensure smooth operation.
 A tempering valve must be installed when used with solar or wet-back hot water systems.
 If flow is restricted, clean the aerator and filter washers.
 Ensure a waterproof seal is achieved between the mixer and mounting surface.
 Flexible hoses are fixed and must not be replaced with non-original parts.
 All hygiene outlets must deliver water at a safe temperature in accordance with local regulations.

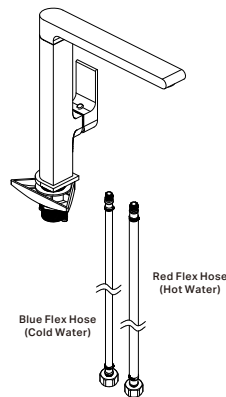


PRE-INSTALL

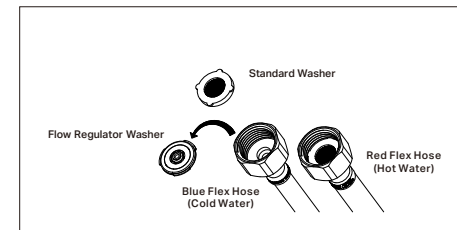
Flexible Hose Adjustment

The Basin/Kitchen Mixer Low Pressure Kit II is specifically designed for use under both low-pressure and mains-pressure conditions.

1. For low-pressure users, simply connect the flexible hoses from the kit directly to the mixer, as the cold water hose is already fitted with a flow regulator washer to help balance hot and cold water pressure.
2. For mains-pressure users, the flow regulator washer inside the cold hose must be removed and replaced with a standard washer following the diagram below.



Basin/Kitchen Mixer Low Pressure Kit II



NOTE:

1. The **Blue Flex Hose** with a **Flow Regulator Washer** inside is for cold water, while the red one is for hot water.
2. Ensure the side with the O-ring is positioned facing up. When you intend to use the flow regulator washer again.

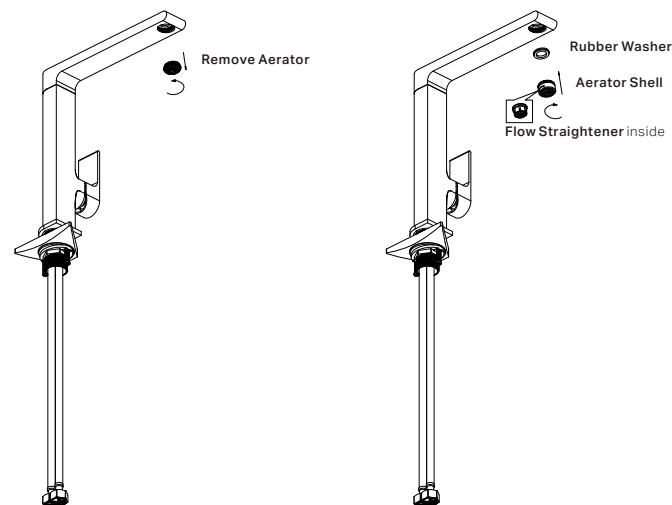
Aerator Replacement

When low-pressure hoses are used, the factory-installed aerator must be replaced with the flow straightener included separately in the kit.

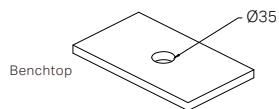
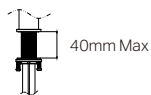
1. Remove the pre-installed aerator from the spout.
2. Fit the flow straightener into the aerator shell as shown in the installation diagram.

NOTE:

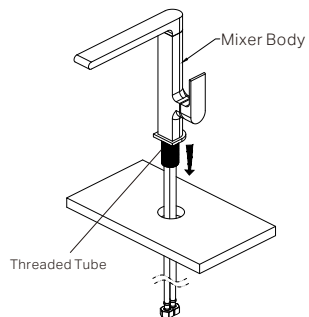
Using the correct combination of flexible hoses and aerator is essential to ensure proper flow performance.



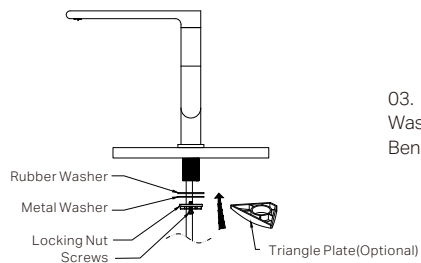
INSTALL THE MIXER



01. Pre-drill or create a Mounting Hole with a diameter of 35mm in the Benchtop. Please note that the Benchtop thickness should not exceed 30mm if stabilizer is added, otherwise, it can reach up to 40mm.



02. Attach the Base Plate, Threaded Tube to Mixer Body and screw the Flexible Hoses into the bottom of the Mixer Body.
NOTE: Ensuring the O-ring sits within the bottom groove of the Base Plate to prevent water leakage.



03. Fit the Rubber Washer (stabilizer if needed) and Metal Washer over the Threaded Rods, secure the Mixer firmly to the Benchtop by tightening the Hex Nut.

4. Connect the **Flexible Hoses** to the corresponding **Hot and Cold Water Supply Valves**.
5. Check all connections for leaks. If any fittings are leaking, shut off the water as necessary to stop the leaks. Contact the supplier for warranty claim.

MAINTENANCE AND CARE:

- Regularly check the mixer and connections for signs of wear or leaks.
- Clean the tap with mild soapy water to maintain its appearance, avoiding harsh chemicals and abrasive materials.

Nero

