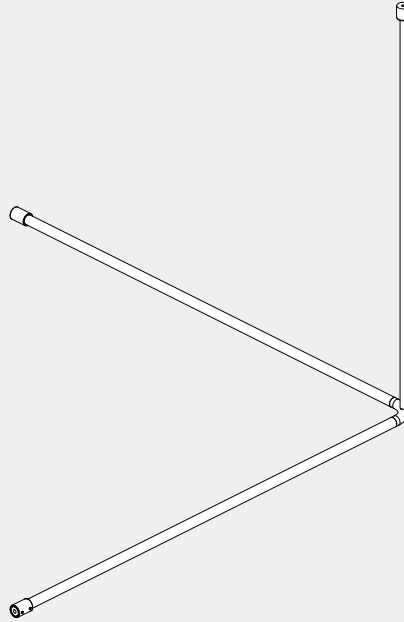


Mecca Care Curtain Rail

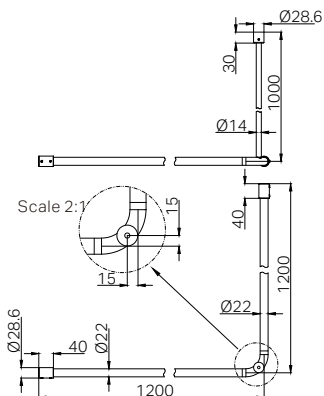
1200*1200mm 90 Degree

Nero



Version : 202506

Drawing



Features

Complies with AS 1428.1 – suitable for DDA /PWD/wheelchair-accessible showers.
Designed for use in homes, public bathrooms, aged care, schools, and medical facilities.
Stainless steel construction with high-durability finish.
Modular ceiling and wall mount design ensures secure installation

Finish & SKU



Chrome
NRCR0006CH



Gun Metal
NRCR0006GM



Brushed Nickel
NRCR0006BN



Matte Black
NRCR0006MB



Brushed Gold
NRCR0006BG



Brushed Bronze
NRCR0006BZ

Packing Includes

1x Curtain Rail
1x Installation Kit

*Dimensions are nominal measurements only.

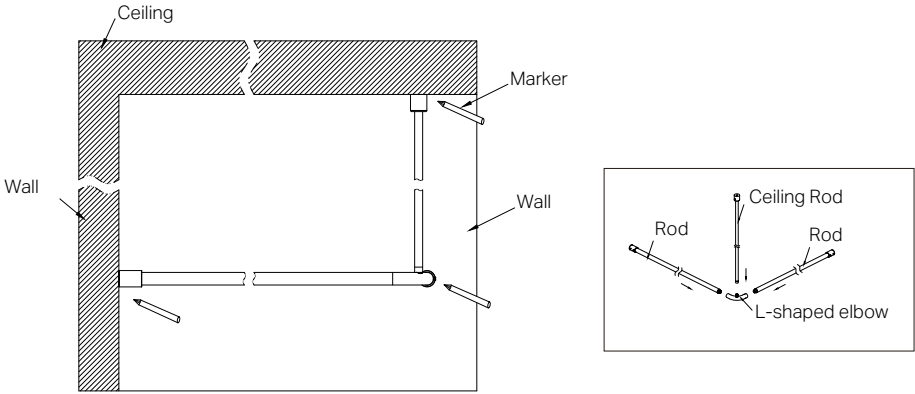
INSTALLATION INSTRUCTIONS

GENERAL INSTRUCTIONS:

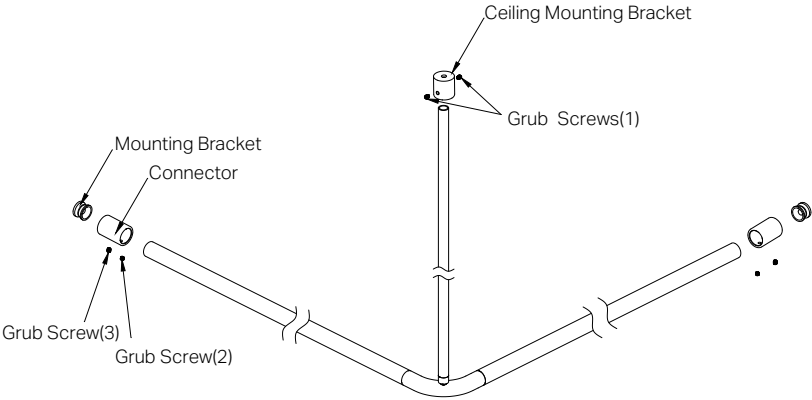
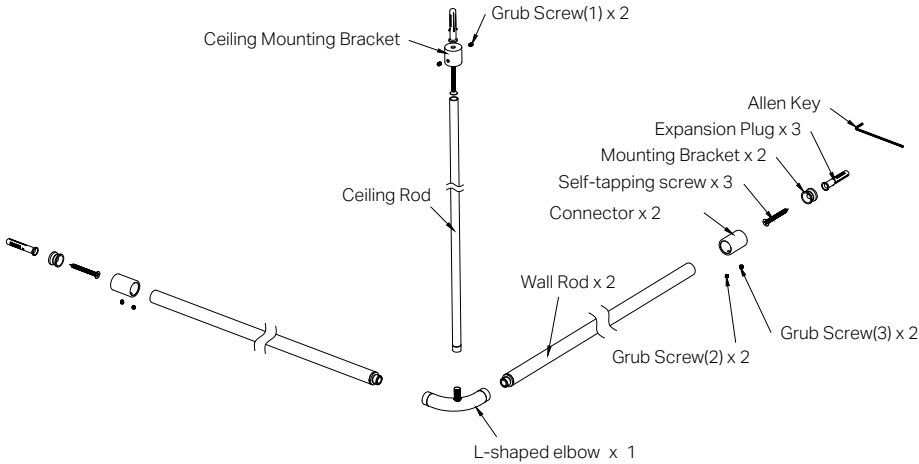
- The Mecca Care Curtain Rail is a 1200×1200mm L-shaped support system is designed to provide a practical and compliant shower curtain solution for accessible bathrooms. It is suitable for use in homes, aged care, public showers, medical facilities, and other environments.
- Compliant for AS 1428.1 DDA/Wheelchair Accessible showers and standard bathrooms.
- A licensed trade professional must carry out the installation.
- Though the rail is not intended for weight bearing the wall structure must be assessed for suitability .
- Easy install, modular rails can be cut down in each direction during installation.
- Suits all standard hookless curtains or regular shower curtain hooks (curtains and hooks not included)
- You can install either two curtains to fully enclose the shower or a single curtain for one end open walk in showers

INSTALLATION STEPS

01. Assemble the three rods onto the L-shaped elbow. Hold the rail against the intended wall and ceiling position. Mark all screw locations.



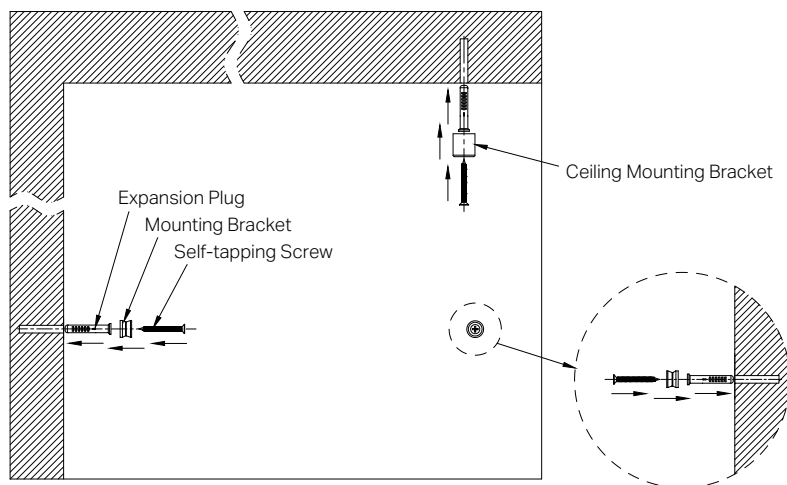
02. Refer to the diagram below to disassemble Components.
Note: Ensure each screw is kept with its original mounting part to avoid confusion during reassembly.



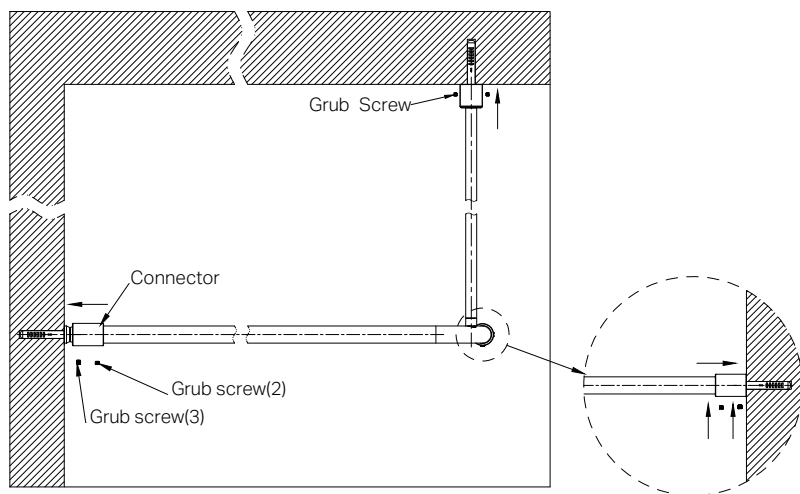
NOTE:
• Keep screws organised. Do not mix them up during reassembly.

INSTALLATION STEPS

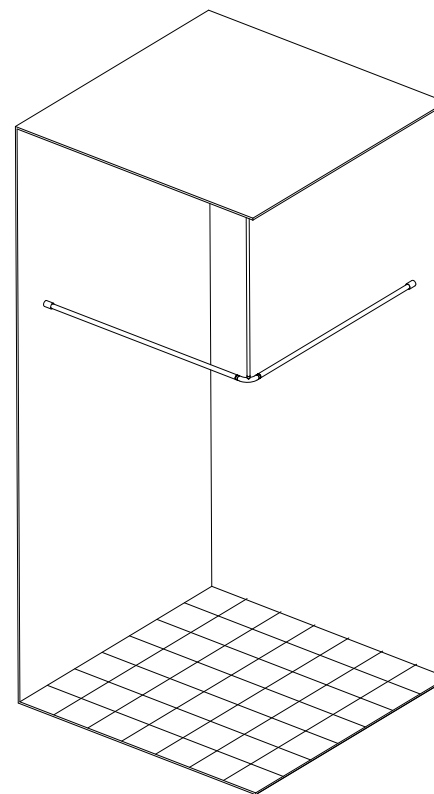
03. Drill Ø10mm holes at the marked positions shown in the diagram. Insert the supplied expansion plugs. Then, secure the wall mounting bracket and ceiling mounting bracket using the provided self-tapping screws.



04. Reinsert the rods into the L-shaped elbow. Attach the rods to the mounting brackets using the screws and grub screws.



05. Confirm all connections are tight. Ensure the rail is stable and aligned.



Nero

