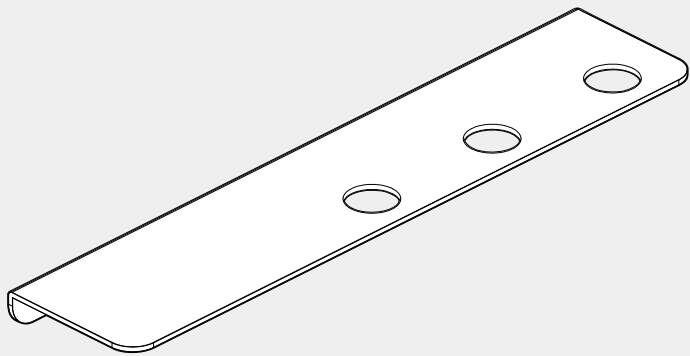


Mecca

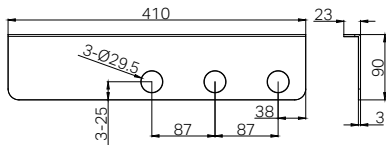
Nero

Triple Soap Bottle Holder  
With Shelf



Version:202512

Drawing








Features

- 304 Stainless Steel Construction
- Fits Most Soap Bottles
- Minimal Design With Shelf
- Easy To Install

Package Includes

- 1x Soap Bottle Holder
- 1x Installation Kit

Finish & SKU

- |  |  |  |
|--|--|--|
|  <b>Chrome</b><br>NR1985cCH       |  <b>Gun Metal</b><br>NR1985cGM      |  <b>Brushed Bronze</b><br>NR1985cBZ |
|  <b>Brushed Gold</b><br>NR1985cBG |  <b>Brushed Nickel</b><br>NR1985cBN |  <b>Matte White</b><br>NR1985cMW    |
|  <b>Matte Black</b><br>NR1985cMB  |  |  |

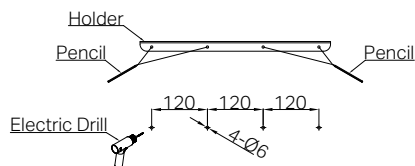
\*Dimensions are nominal measurements only

# INSTALLATION INSTRUCTIONS

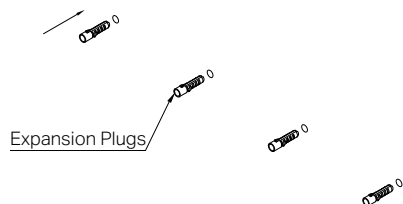
## GENERAL INFORMATION

- Please ensure installation is carried out by a suitably qualified trades person.
- Prior to drilling, verify that there are no concealed services (e.g. water pipes, electrical wiring behind the selected installation area.)
- Do not substitute mechanical fixings with adhesive or silicone-based products.
- Avoid installing the product on surfaces subject to constant vibration, movement, or structural instability.

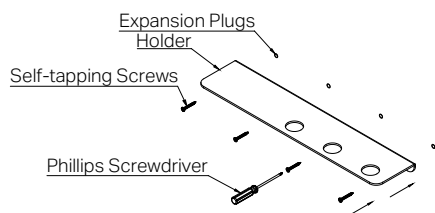
## INSTALLATION STEPS



1. Drill four Ø6 mm holes, 120 mm centre to centre, at the marked location.



2. Place the supplied expansion plugs into all holes.



3. Align the holder with the holes and secure it with self-tapping screws supplied.

## MAINTENANCE AND CARE

Periodically inspect the fittings to ensure that they remain secure. Re-tighten fixings as required.

Use a soft cloth and mild soapy water to clean the surface. Do not use harsh chemicals, abrasive cleaners, acidic substances, or scouring pads, as these may damage the finish.

# Nero

